

AERODROME CHART - ICAO

24°33'01"N
039°42'21"E

ELEV 2134

TWR: 118.3 124.2
GND: 121.9 121.5
ATIS: 126.85

MADINAH / PRINCE MOHAMMAD BIN ABDULAZIZ INTERNATIONAL

RWY	DIRECTION	THR	THR GUND	BEARING STRENGTH
36	360°	24°32'10"N 039°42'07"E	30	PCN 59/F/A/W/T ASPHALT
18	180°	24°33'49"N 039°42'14"E	30	
17	165°	24°34'35"N 039°42'12"E	30	PCN 80/R/A/W/T CONCRETE (BEYOND 250M PCN 75/F/A/W/T)
35	345°	24°32'17"N 039°42'41"E	30	

TAXIWAYS 25 m WIDE (EXCEPT TWYs E,F,G,H & PART OF TWY D PARALLEL TO RWY 18/36: 23 M)



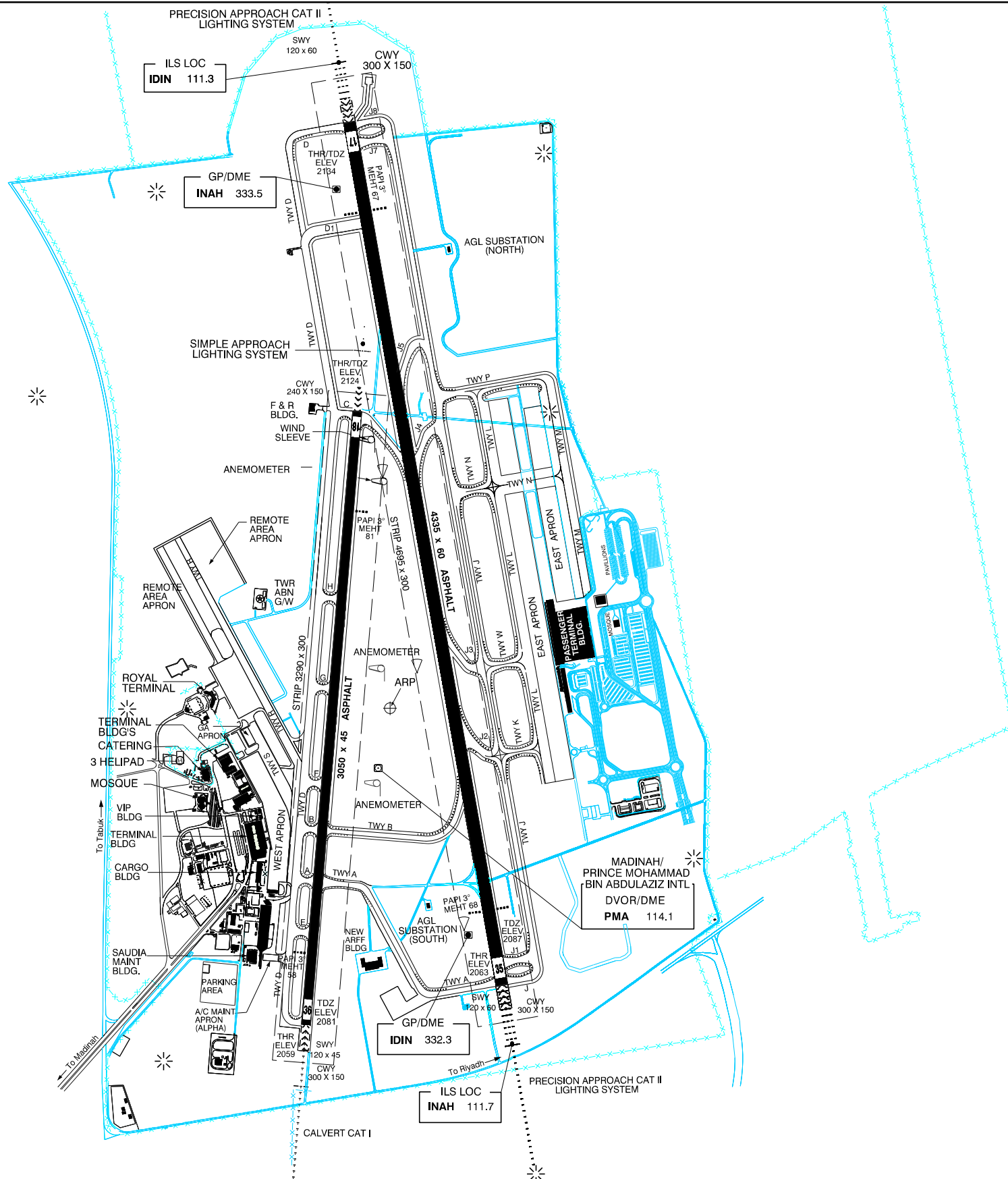
ELEV, ALT IN FEET
ALT IN FEET
DIMENSIONS IN METRES
BRG ARE MAG
ANNUAL RATE OF CHANGE 3'E

ALTIMETER CHECKPOINT POSITION:
WEST APRON 24°32'43.5"N 039°42'00.7"E
ELEVATION: 2080 FT
EAST APRON 24°33'17.1"N 039°42'46.9"E
ELEVATION: 2107 FT

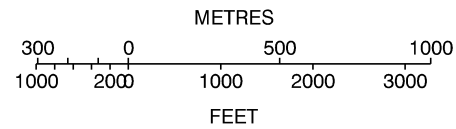
NOTE:
APRON ACFT MAINT (ALPHA) SOUTH WEST END
TWY D OPR FOR ALL ACFT WITH ACN LESS THAN
PCN 63/R/B/W/T, AND EXERCISE EXTREME
CAUTION NO ATC VISUAL CONTACT.

NOTE:
RWY 17/35 PRIMARY RUNWAY
RWY 18/36 WILL BE USED IN BAD
WEATHER AND LOW VISIBILITY OR
WHEN RWY 17/35 IS U/S AND UNDER
ATC AUTHORIZATION.

WARNING:
DURING LANDING OR TAKING OFF WIDE
BODIED ACFT ON RWY 18/36, ANY TAXIING
ON PARALLEL TWY IS NOT ALLOWED AND
VICE VERSA.



CHANGE : RWY 18/36 VASIS replaced by PAPI



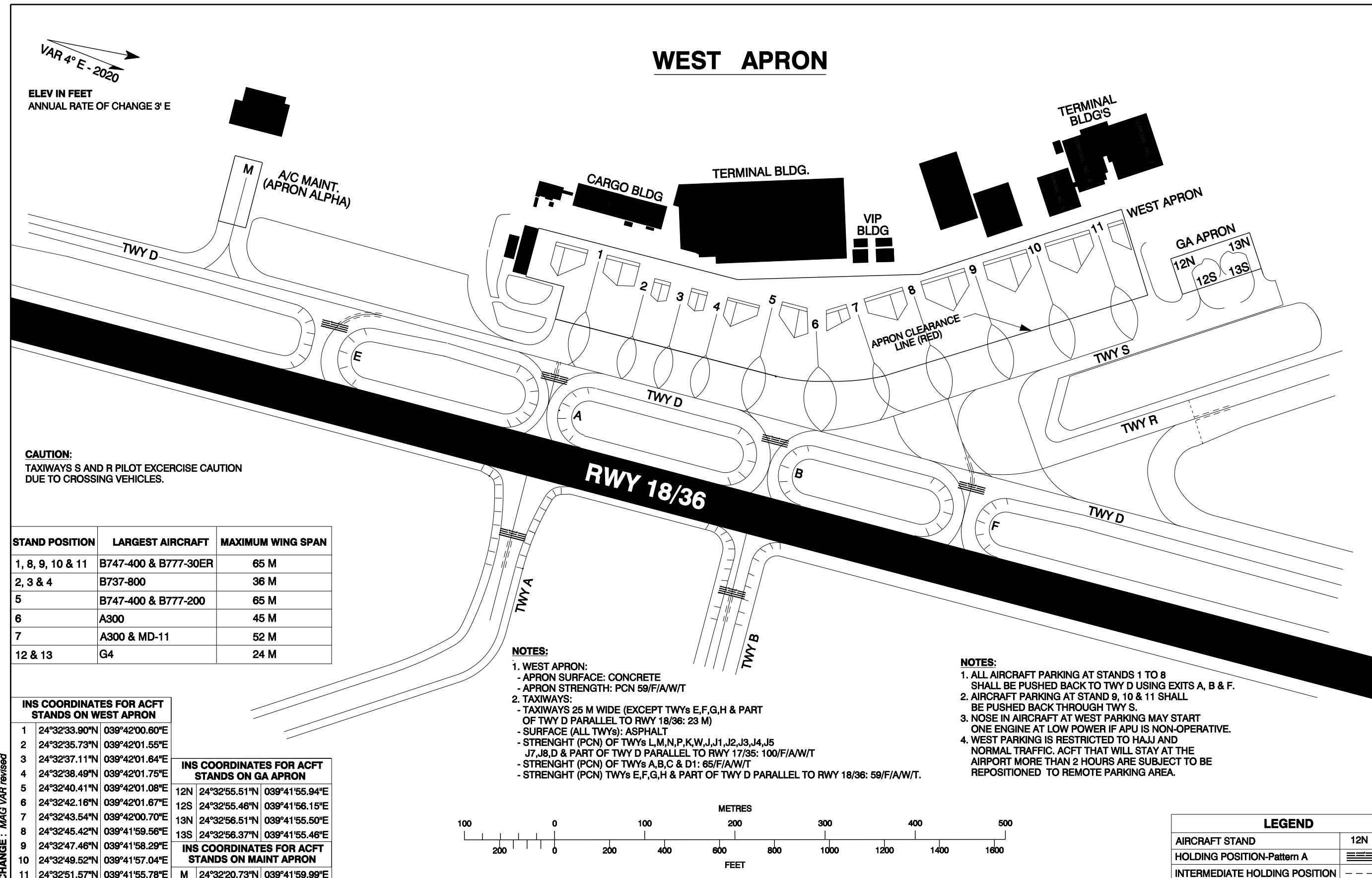
LEGEND	
WIND SHEAR SENSOR	
RWY VISUAL RANGE (RVR)	
ANEMOMETER	
HELIPAD	
SERVICE ROAD	
FENCE	

**AIRCRAFT PARKING /
DOCKING CHART - ICAO**

APRON ELEV 2089

TWR: 118.3 124.2
GND: 121.9

MADINAH / PRINCE MOHAMMAD BIN ABDULAZIZ INTERNATIONAL

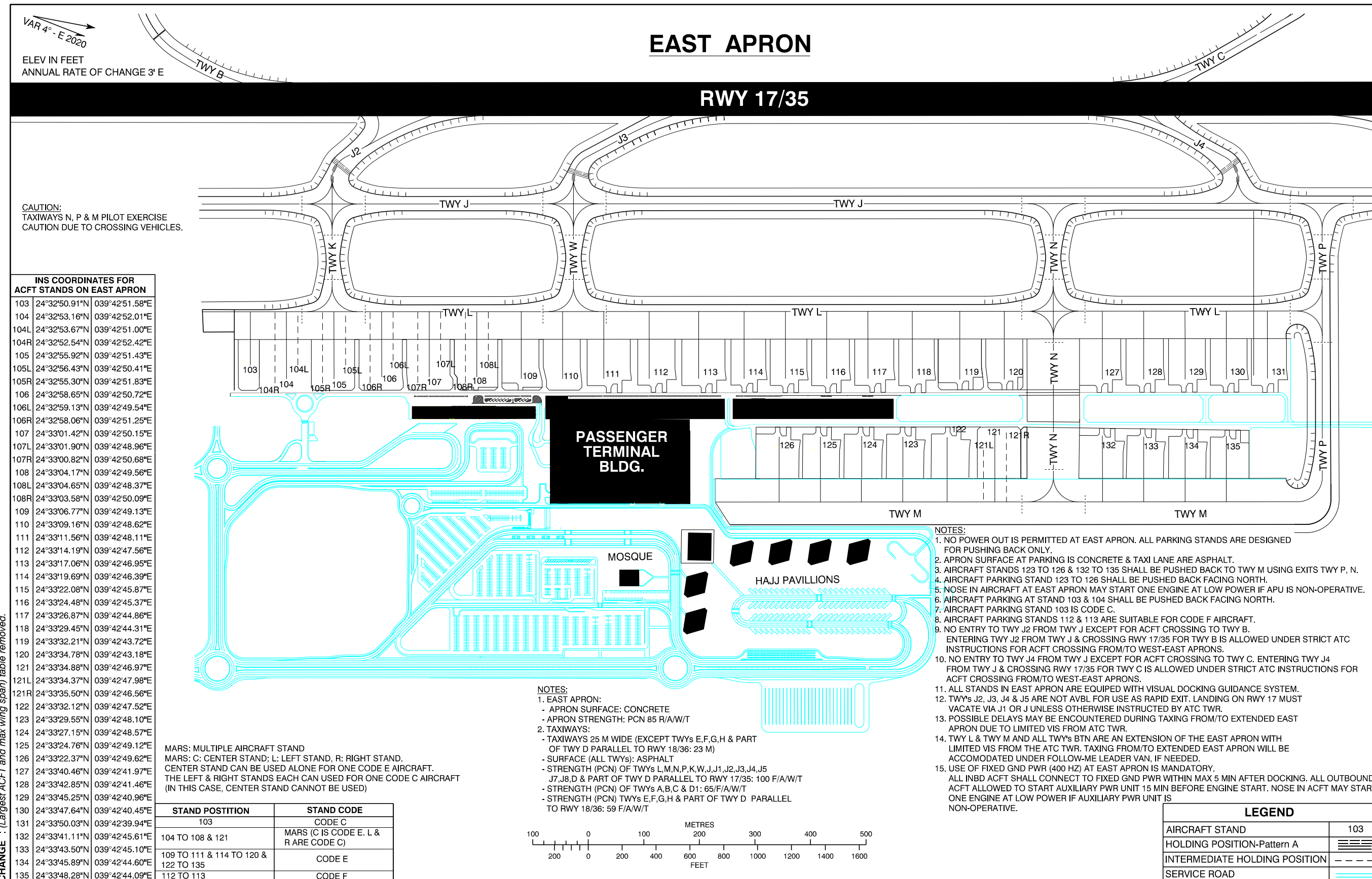


AIRCRAFT PARKING /
DOCKING CHART - ICAO

APRON ELEV: 2150

TWR: 118.3 124.2
GND: 121.9

MADINAH / PRINCE MOHAMMAD BIN ABDULAZIZ INTERNATIONAL

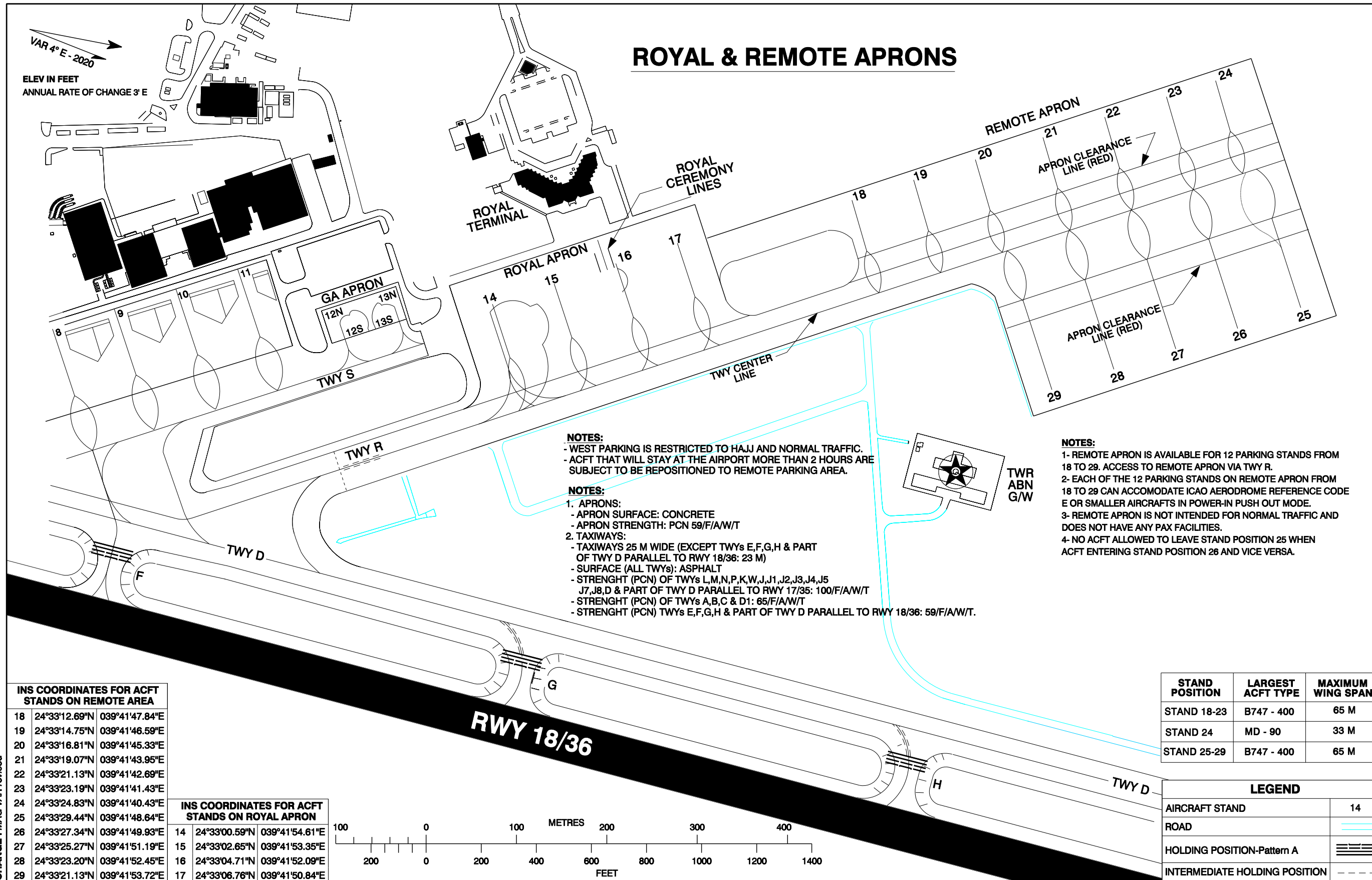


AIRCRAFT PARKING / DOCKING CHART - ICAO

APRON ELEV 2102

TWR: 118.3 124.2
GND: 121.9

MADINAH / PRINCE MOHAMMAD BIN ABDULAZIZ INTERNATIONAL



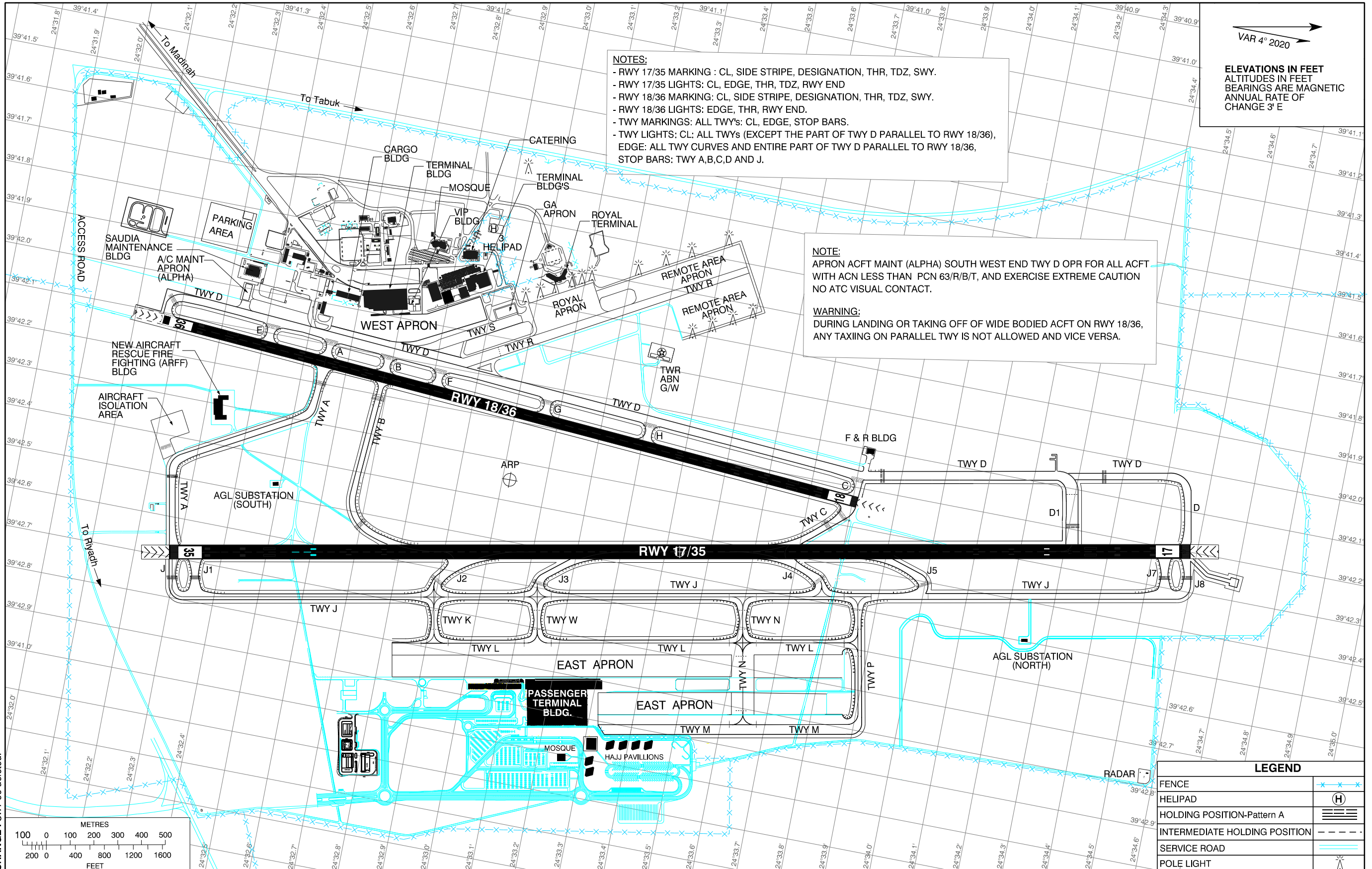
CHANGE : MAG VAR revised

**AERODROME GROUND
MOVEMENT CHART - ICAO**

APRON ELEV: 2102

TWR: 118.3 124.2
GND: 121.9
ATIS: 126.85

MADINAH / PRINCE MOHAMMAD BIN ABDULAZIZ INTERNATIONAL



NOTES:
 - RWY 17/35 MARKING : CL, SIDE STRIPE, DESIGNATION, THR, TDZ, SWY.
 - RWY 17/35 LIGHTS: CL, EDGE, THR, TDZ, RWY END
 - RWY 18/36 MARKING: CL, SIDE STRIPE, DESIGNATION, THR, TDZ, SWY.
 - RWY 18/36 LIGHTS: EDGE, THR, RWY END.
 - TWY MARKINGS: ALL TWY'S: CL, EDGE, STOP BARS.
 - TWY LIGHTS: CL: ALL TWY'S (EXCEPT THE PART OF TWY D PARALLEL TO RWY 18/36),
 EDGE: ALL TWY CURVES AND ENTIRE PART OF TWY D PARALLEL TO RWY 18/36,
 STOP BARS: TWY A,B,C,D AND J.

NOTE:
 APRON ACFT MAINT (ALPHA) SOUTH WEST END TWY D OPR FOR ALL ACFT
 WITH ACN LESS THAN PCN 63/R/B/T, AND EXERCISE EXTREME CAUTION
 NO ATC VISUAL CONTACT.

WARNING:
 DURING LANDING OR TAKING OFF OF WIDE BODIED ACFT ON RWY 18/36,
 ANY TAXIING ON PARALLEL TWY IS NOT ALLOWED AND VICE VERSA.

VAR 4° 2020

ELEVATIONS IN FEET
 ALTITUDES IN FEET
 BEARINGS ARE MAGNETIC
 ANNUAL RATE OF
 CHANGE 3' E

CHANGE : SWY 36 deleted.

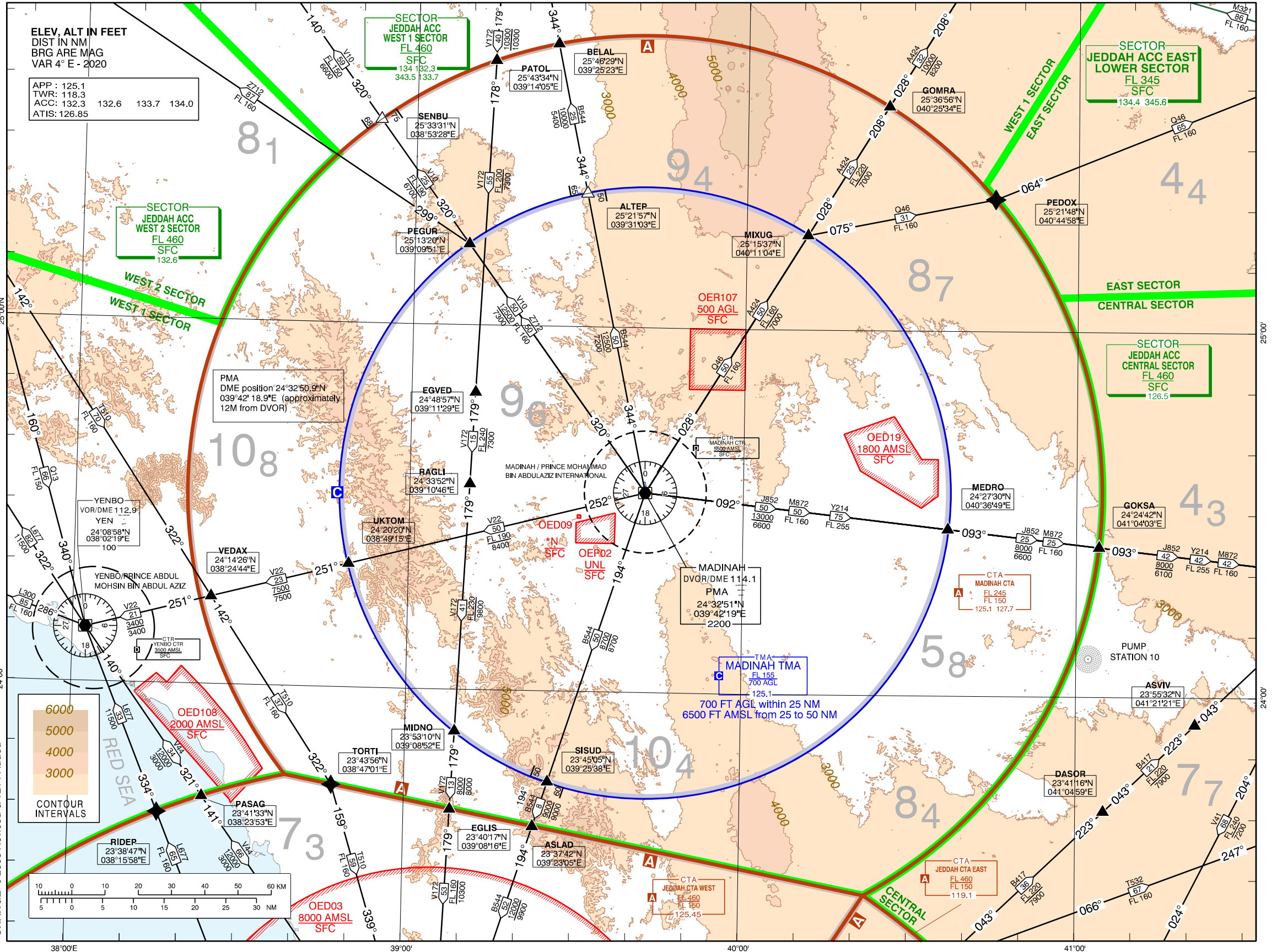
LEGEND	
FENCE	—*—*—*
HELIPAD	(H)
HOLDING POSITION-Pattern A	≡≡≡
INTERMEDIATE HOLDING POSITION	- - - - -
SERVICE ROAD	— — — — —
POLE LIGHT	⊙

AREA CHART - ICAO

DEPARTURE AND TRANSIT ROUTES

TMA MADINAH

LEGEND	
BOUNDARIES	
FLIGHT INFORMATION REGION (FIR)	[Symbol]
SECTOR	[Symbol]
CONTROL AREA (CTA)	[Symbol]
TERMINAL CONTROL AREA (TMA)	[Symbol]
CONTROL ZONE (CTR)	[Symbol]
AERODROME TRAFFIC ZONE (ATZ)	[Symbol]
AIRWAY (AWY)	[Symbol]
AIR TRAFFIC SERVICES	
CLASS OF AIRSPACE	AIRSPACE TYPE/NAME
[Symbol]	TMA MADINAH TMA
LOWER LIMIT	700 AGL
UPPER LIMIT	125.1
RADIO FREQUENCY	
NAVIGATION WARNINGS	
IDENTIFICATION OF AREA	[Symbol]
VERTICAL LIMITS	[Symbol]
*N: ACTIVITY NOTIFIED BY NOTAM	
RADIO NAVIGATION AIDS (NAVAID)	
MADINAH/PRINCE MOHAMMAD BIN ABDULAZIZ INTL	NAME
NAVAID TYPE & FREQUENCY	DVOR/DME 114.1
IDENTIFICATION	PMA "SS"
GEOGRAPHICAL COORDINATES	24°32'51"N 039°42'19"E
	ELEVATION OF DME ANTENNA 2200
ATS ROUTE	
ROUTE DESIGNATOR	[Symbol]
MAGNETIC TRACK	[Symbol]
MINIMUM OBSTACLE CLEARANCE ALTITUDE	[Symbol]
DIRECTION OF TRAFFIC FLOW	
RNAV(S) ROUTE	
CHANGE OVER POINT (COP)	
[Symbol]	
SIGNIFICANT POINT FUNCTIONALITY	
[Symbol]	
AREA MINIMUM ALTITUDE (AMA)	
INDICATES THOUSANDS = 4300 FT AMSL	
INDICATES HUNDRED	
HOLDING PATTERN	
HOLDING PATTERN OUTBOUND / INBOUND MAGNETIC TRACK	
COM FAILURE	
squawk 7600 mode A/3 and follow COM failure procedure on relevant SID or STAR	



CHANGE : L883 Revised & Y214 Added

**STANDARD DEPARTURE CHART -
INSTRUMENT (SID) - ICAO**

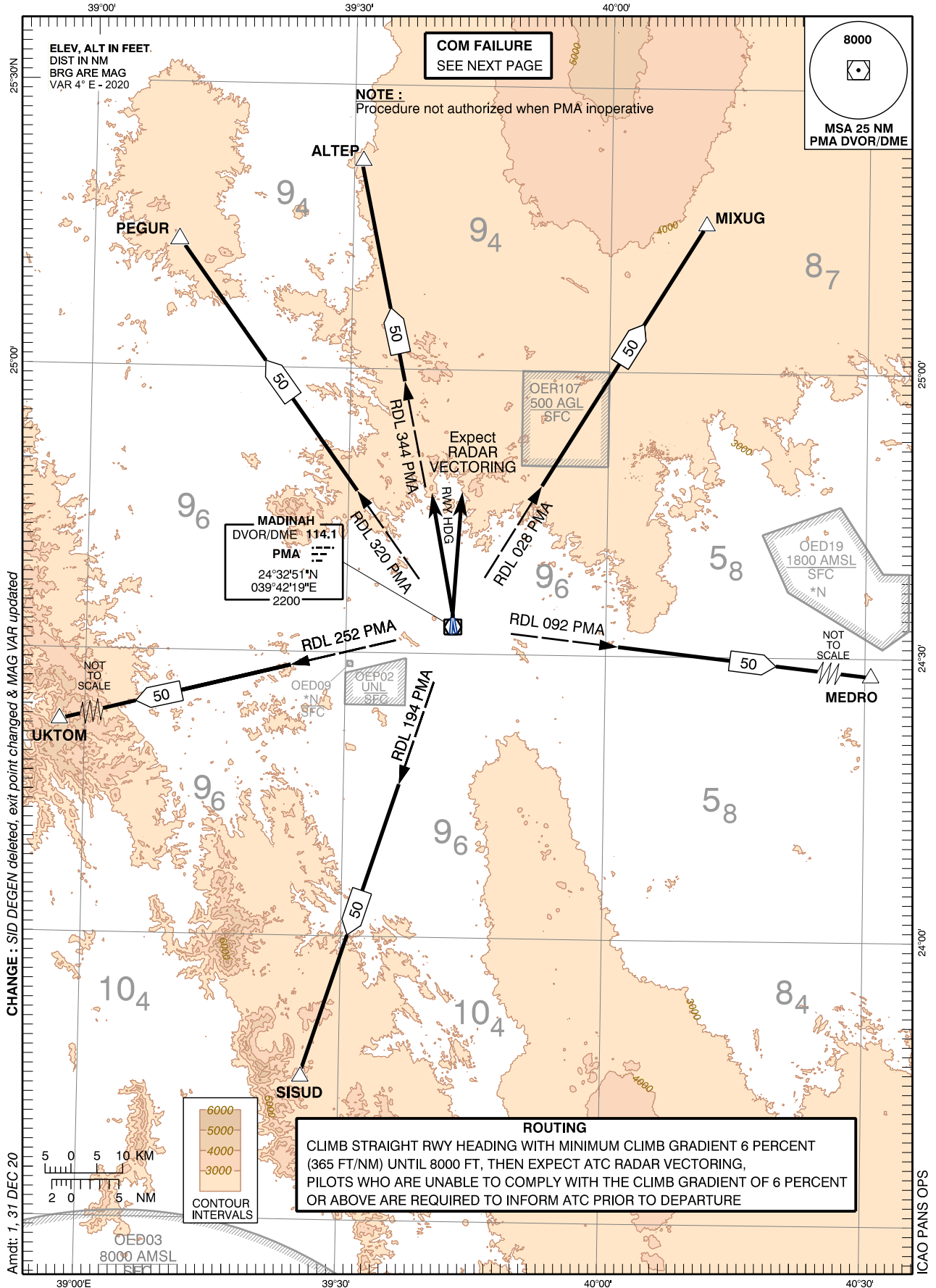
TRANSITION ALTITUDE
13000 FT

APP : 125.1 127.7
TWR : 118.3 124.2
GND : 121.9
ATIS : 126.85

**MADINAH/Prince Mohammad
Bin Abdulaziz Intl (OEMA)**

RWY 35/36

SID TANGO (RADAR VECTOR)



**STANDARD DEPARTURE CHART -
INSTRUMENT (SID) - ICAO**

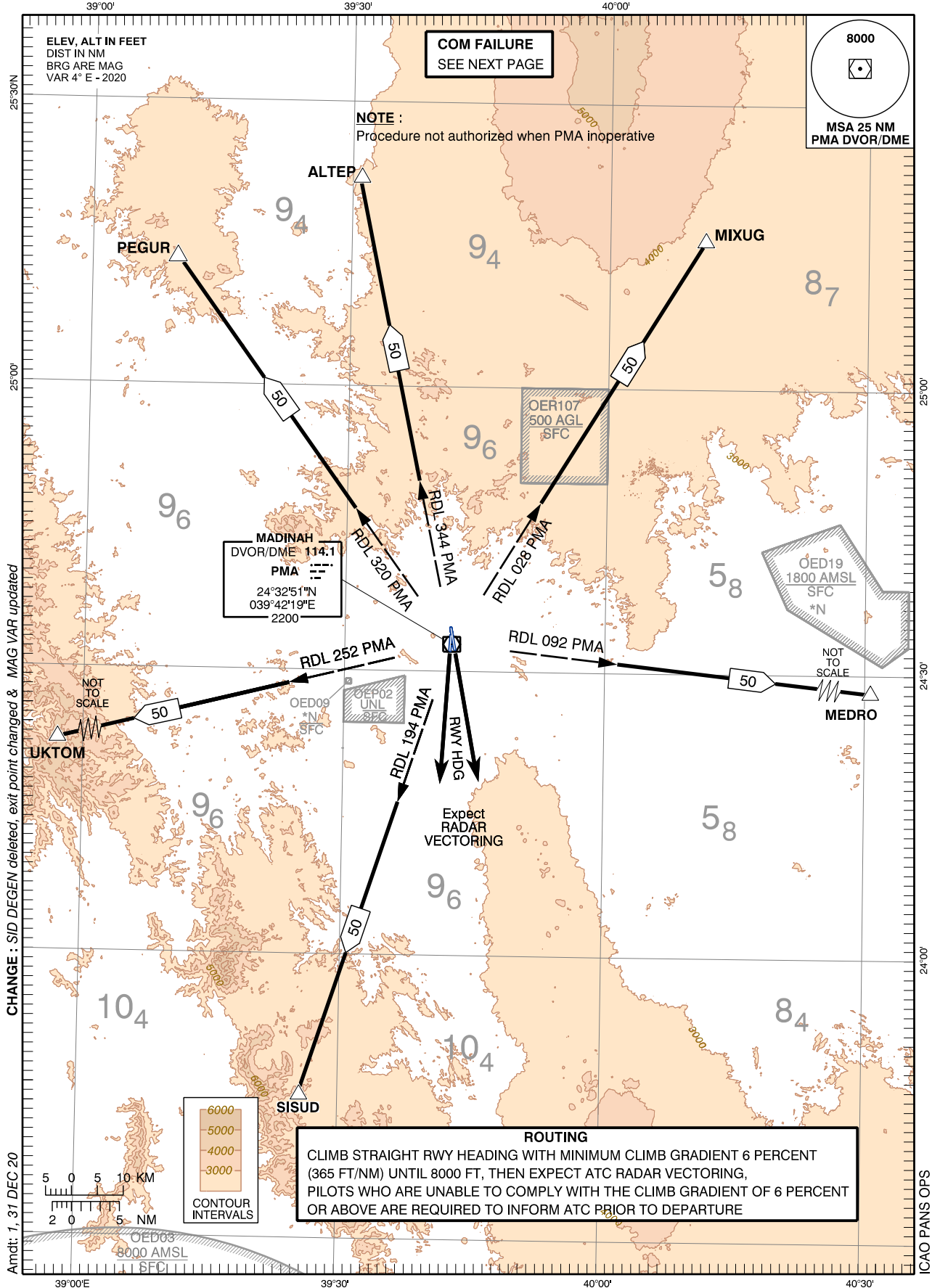
TRANSITION ALTITUDE
13000 FT

APP : 125.1 127.7
TWR : 118.3 124.2
GND : 121.9
ATIS : 126.85

**MADINAH/Prince Mohammad
Bin Abdulaziz Intl (OEMA)**

RWY 17/18

SID ZULU (RADAR VECTOR)



**STANDARD DEPARTURE CHART -
INSTRUMENT (SID) - ICAO**

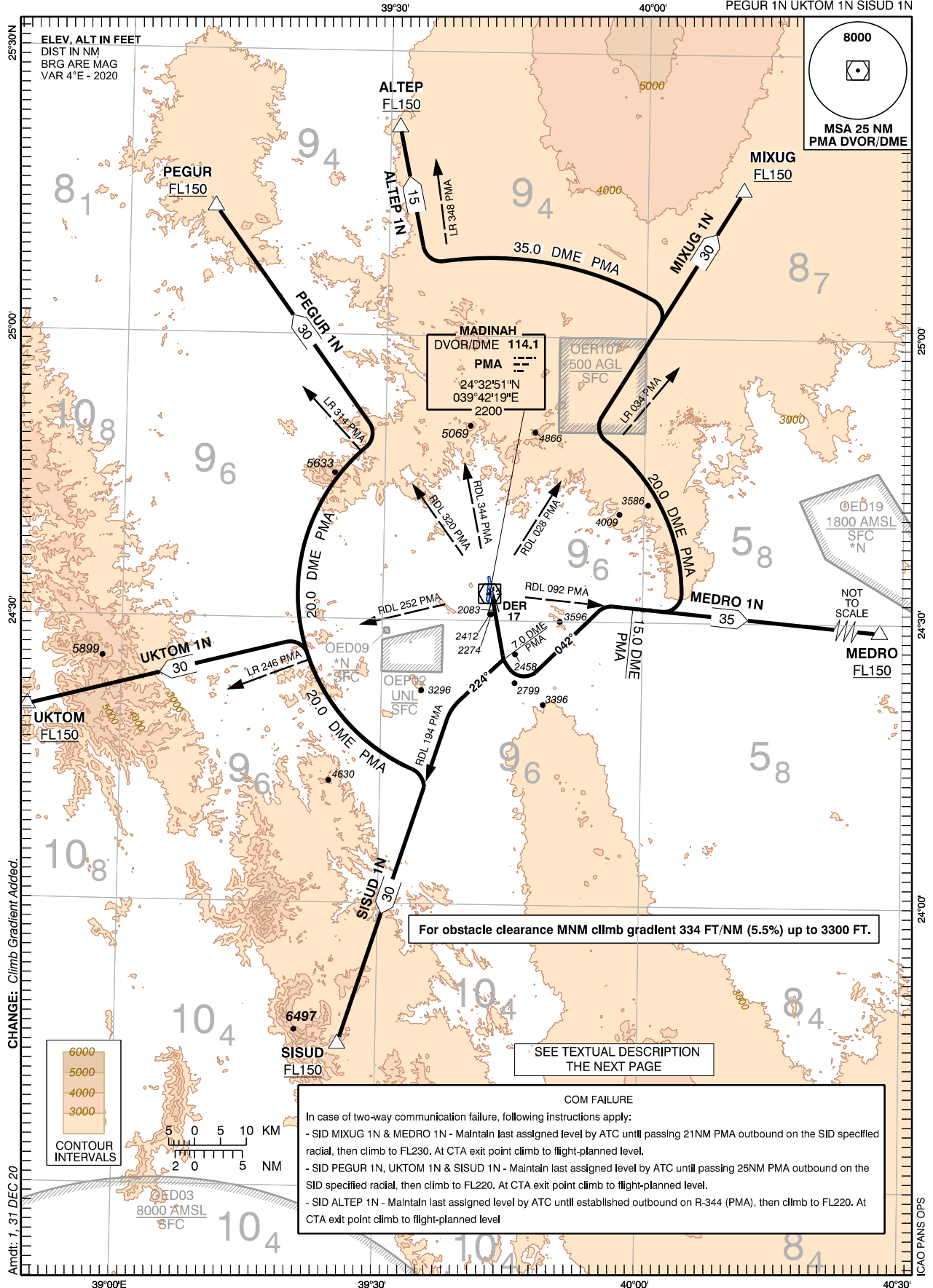
TRANSITION ALTITUDE
13000 FT
SPEED RESTRICTION
MAX 250 KIAS BELOW
10000 FT AMSL

APP : 125.1 127.7
TWR : 118.3 124.2
GND : 121.9
ATIS : 126.85

**MADINAH/Prince Mohammad
Bin Abdulaziz Intl (OEMA)**

SID RWY 17

MEDRO 1N MIXUG 1N ALTEP 1N
PEGUR 1N UKTOM 1N SISUD 1N



**STANDARD DEPARTURE CHART -
INSTRUMENT (SID) - ICAO**

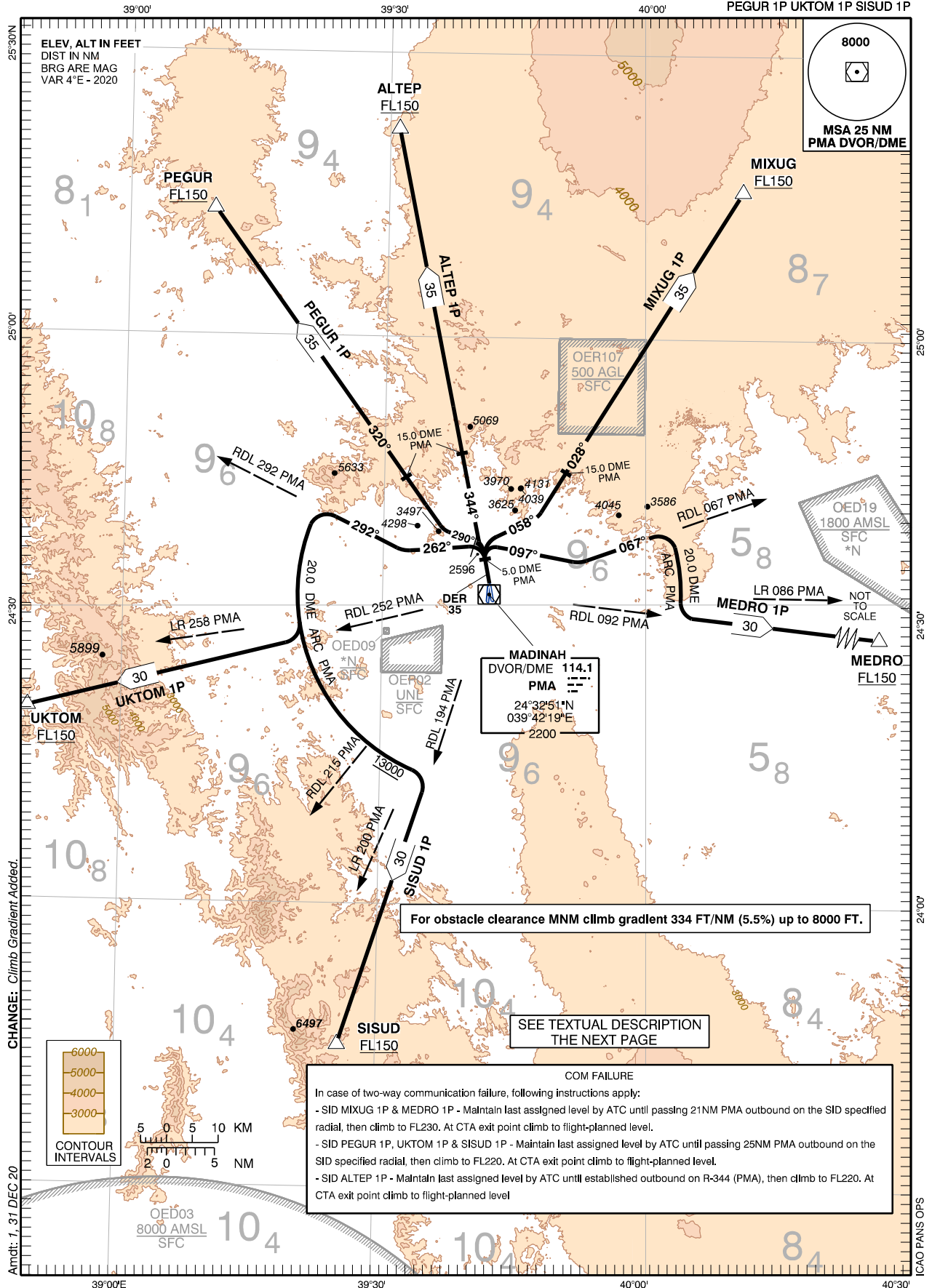
TRANSITION ALTITUDE 13000 FT
SPEED RESTRICTION MAX 250 KIAS BELOW 10000 FT AMSL

APP : 125.1 127.7
TWR : 118.3 124.2
GND : 121.9
ATIS : 126.85

**MADINAH/Prince Mohammad
Bin Abdulaziz Intl (OEMA)**

SID RWY 35

MEDRO 1P MIXUG 1P ALTEP 1P
PEGUR 1P UKTOM 1P SISUD 1P



**STANDARD DEPARTURE CHART -
INSTRUMENT (SID) - ICAO**

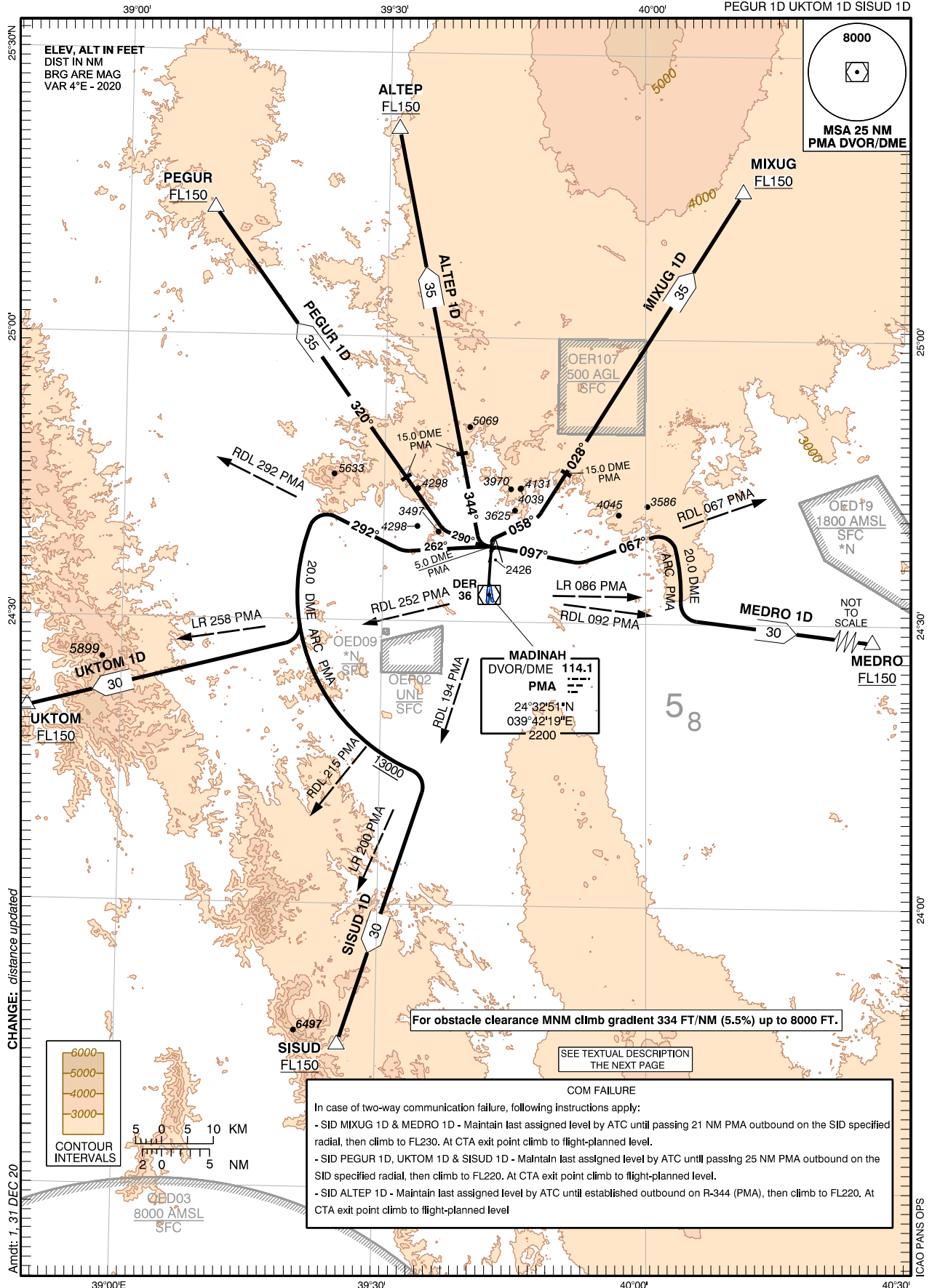
TRANSITION ALTITUDE 13000 FT
SPEED RESTRICTION MAX 250 KIAS BELOW 10000 FT AMSL

APP : 125.1 127.7
TWR : 118.3 124.2
GND : 121.9
ATIS : 126.85

**MADINAH/Prince Mohammad
Bin Abdulaziz Intl (OEMA)**

SID RWY 36

MEDRO 1D MIXUG 1D ALTEP 1D
PEGUR 1D UKTOM 1D SISUD 1D



STANDARD DEPARTURE CHART -
INSTRUMENT (SID) - ICAO

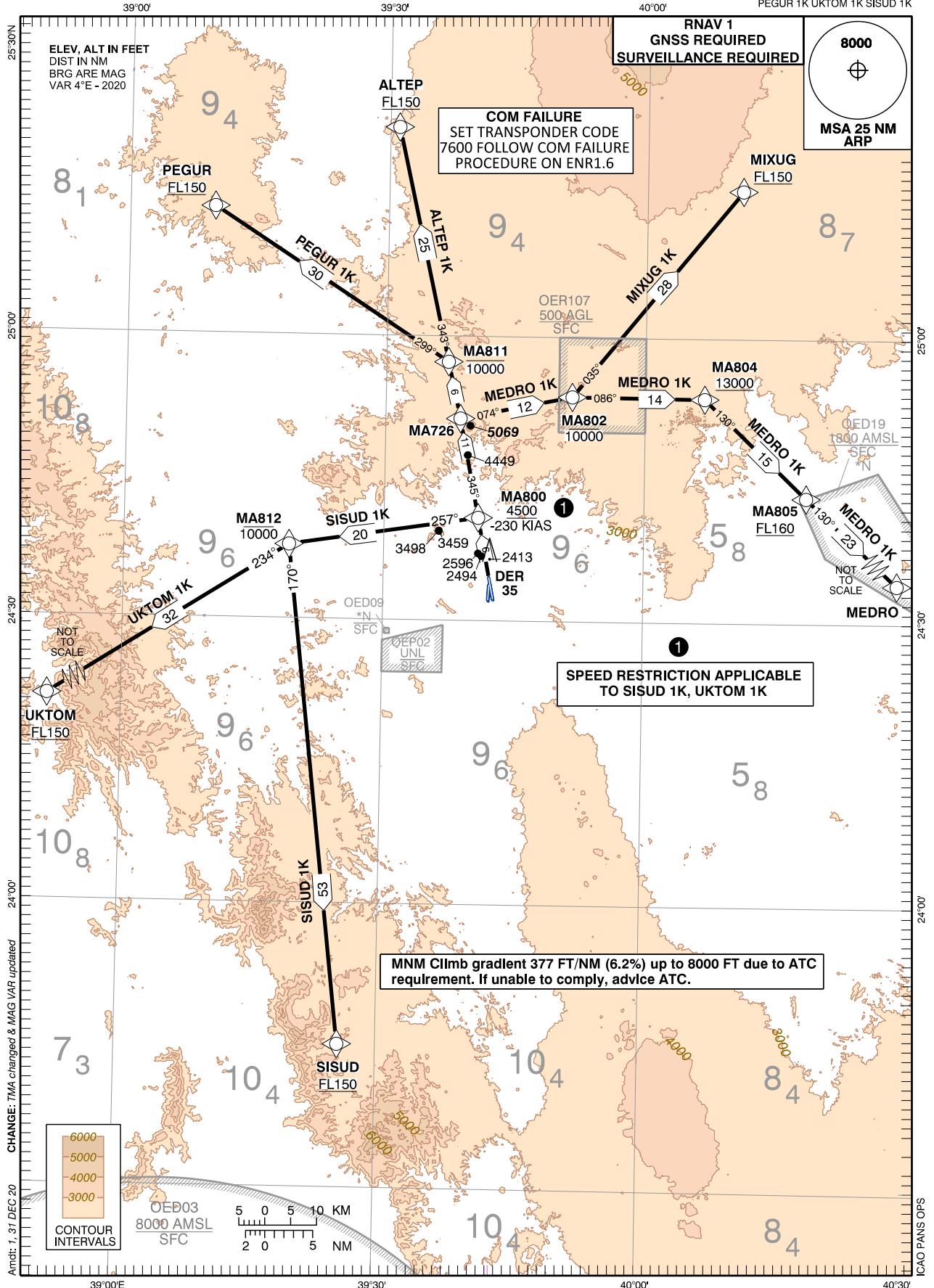
TRANSITION ALTITUDE 13000 FT
SPEED RESTRICTION MAX 250 KIAS BELOW 10000 FT AMSL

APP : 125.1 127.7
TWR : 118.3 124.2
GND : 121.9
ATIS : 126.85

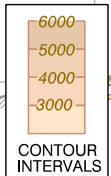
MADINAH/Prince Mohammad
BIn Abdulaziz Intl(OEMA)

SID RNAV RWY 35

MEDRO 1K MIXUG 1K ALTEP 1K
PEGUR 1K UKTOM 1K SISUD 1K



CHANGE: TMA changed & MAG VAR updated
Amdt: 1, 31 DEC 20



**STANDARD DEPARTURE CHART -
INSTRUMENT (SID) - ICAO**

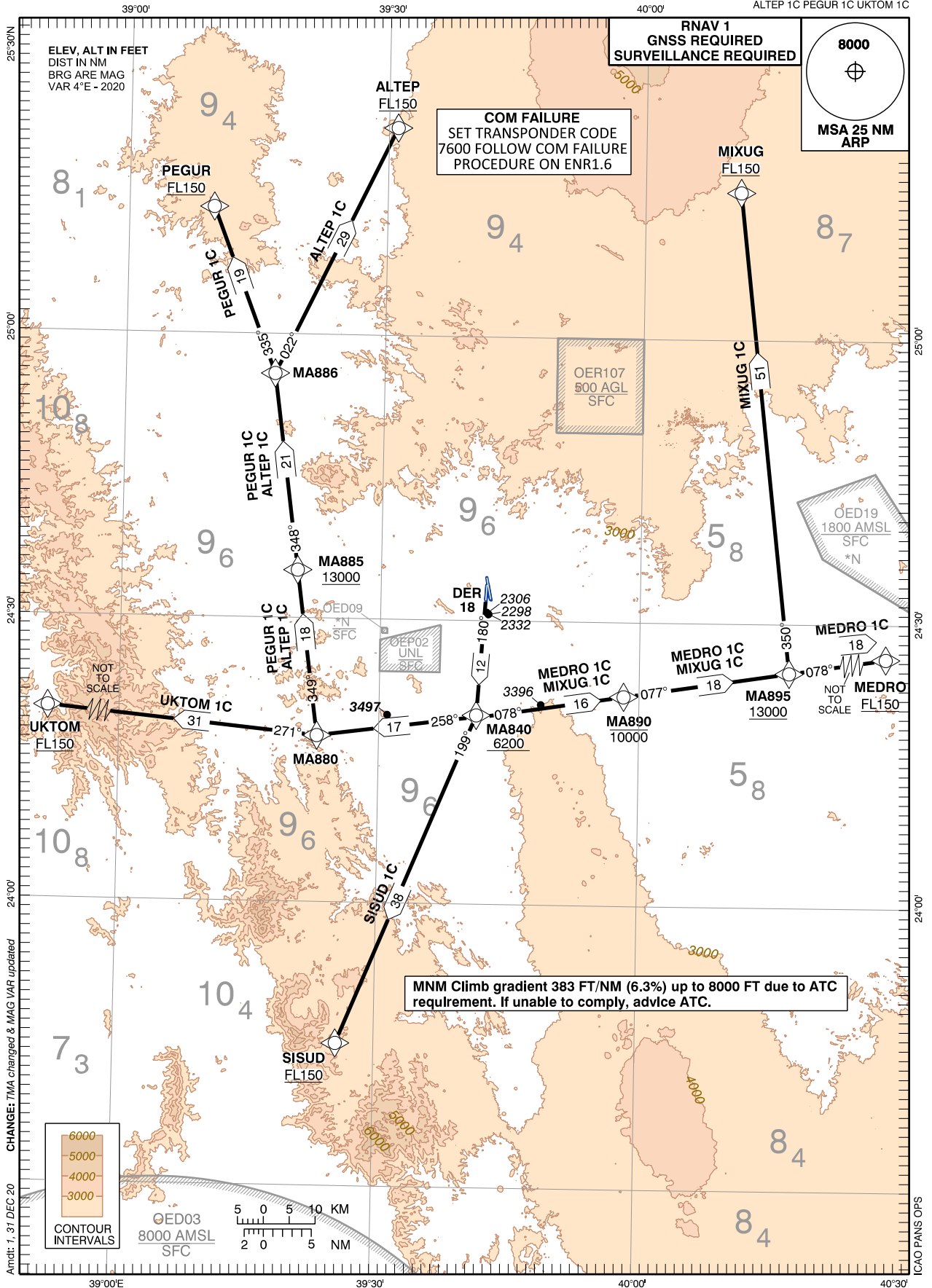
TRANSITION ALTITUDE 13000 FT
SPEED RESTRICTION MAX 250 KIAS BELOW 10000 FT AMSL

APP : 125.1 127.7
TWR : 118.3 124.2
GND : 121.9
ATIS : 126.85

**MADINAH/Prince Mohammad
Bin Abdulaziz Intl (OEMA)**

SID RNAV RWY 18

SISUD 1C MEDRO 1C MIXUG 1C
ALTEP 1C PEGUR 1C UKTOM 1C



STANDARD DEPARTURE CHART -
INSTRUMENT (SID) - ICAO

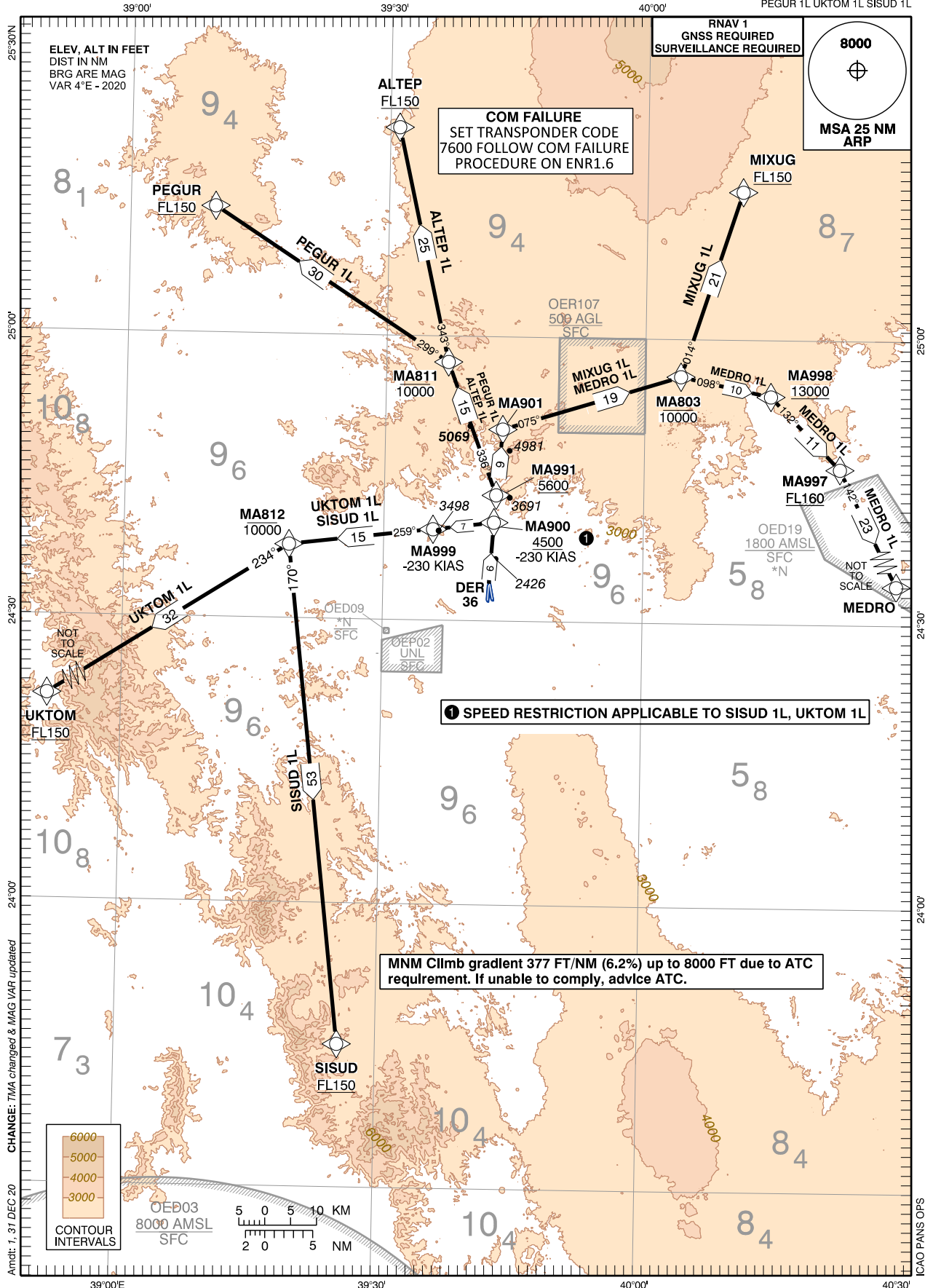
TRANSITION ALTITUDE 13000 FT
SPEED RESTRICTION MAX 250 KIAS BELOW 10000 FT AMSL

APP : 125.1 127.7
TWR : 118.3 124.2
GND : 121.9
ATIS : 126.85

MADINAH/Prince Mohammad
Bin Abdulaziz Intl(OEMA)

SID RNAV RWY 36

MEDRO 1L MIXUG 1L ALTEP 1L
PEGUR 1L UKTOM 1L SISUD 1L

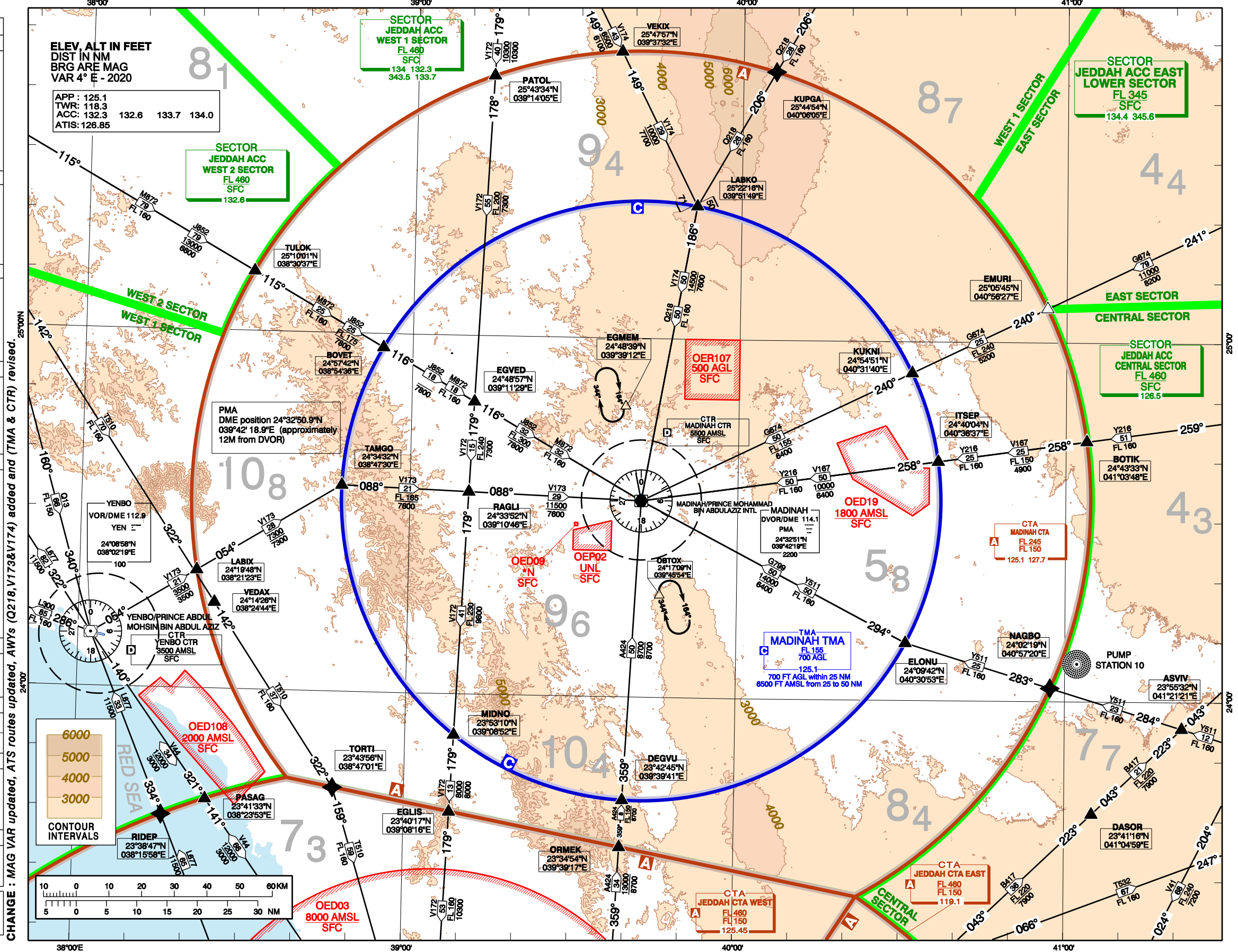


AREA CHART - ICAO

ARRIVAL AND TRANSIT ROUTES

TMA MADINAH

LEGEND	
BOUNDARIES	
FLIGHT INFORMATION REGION (FIR)	
SECTOR	
CONTROL AREA (CTA)	
TERMINAL CONTROL AREA (TMA)	
CONTROL ZONE (CTR)	
AERODROME TRAFFIC ZONE (ATZ)	
AIRWAY (AWY)	
AIR TRAFFIC SERVICES	
CLASS OF AIRSPACE	AIRSPACE TYPE/NAME
LOWER LIMIT	UPPER LIMIT
RADIO FREQUENCY	
NAVIGATION WARNINGS	
IDENTIFICATION OF AREA	P: PROHIBITED R: RESTRICTED D: DANGER
VERTICAL LIMITS	
*N: ACTIVITY NOTIFIED BY NOTAM	
RADIO NAVIGATION AIDS (NAVAID)	
MADINAH/PRINCE MOHAMMAD BIN ABDULLAZIZ INTL	NAME
NAVAID TYPE & FREQUENCY	DVOR/DME 114.1
IDENTIFICATION	MORSE CODE
GEOGRAPHICAL COORDINATES	ELEVATION OF DME ANTENNA
ATS ROUTE	
ROUTE DESIGNATOR	DISTANCE IN NM
MAGNETIC TRACK	MINIMUM ENROUTE ALTITUDE
MINIMUM OBSTACLE CLEARANCE ALTITUDE	
DIRECTION OF TRAFFIC FLOW	
CHANGE OVER POINT (COP)	
SIGNIFICANT POINT FUNCTIONALITY	
AREA MINIMUM ALTITUDE (AMA)	
HOLDING PATTERN	
COM FAILURE	



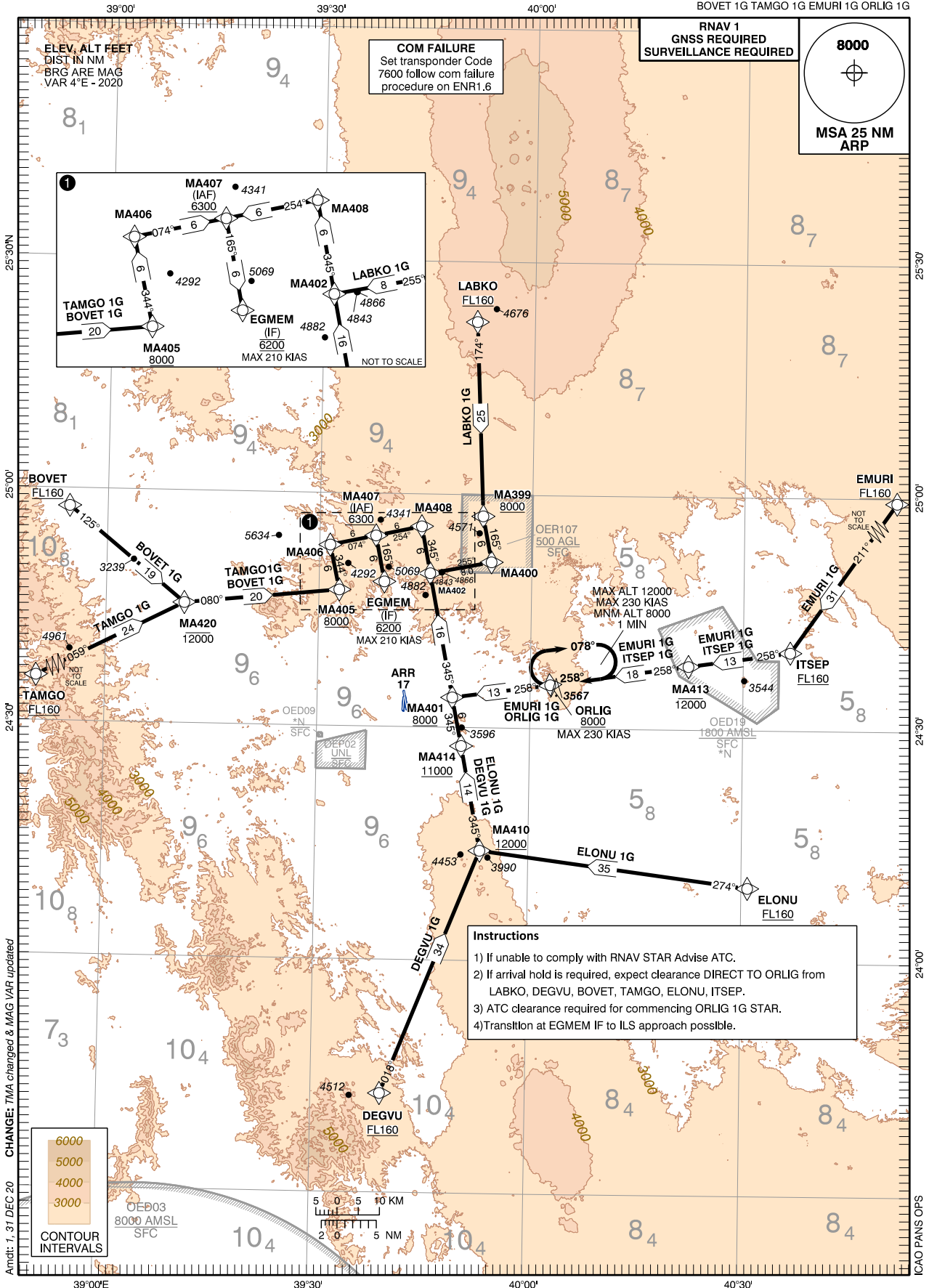
STANDARD ARRIVAL CHART -
INSTRUMENT (STAR) - ICAO

TRANSITION ALTITUDE 13000 FT	APP : 125.1 127.7 TWR : 118.3 124.2 GND : 121.9 ATIS : 126.85
SPEED RESTRICTION MAX 250 KIAS BELOW 10000 FT AMSL	

MADINAH/Prince Mohammad
Bin Abdulaziz Intl(OEMA)

STAR RNAV RWY 17

DEGVU 1G ELONU 1G ITSEP 1G LABKO 1G
BOVET 1G TAMGO 1G EMURI 1G ORLIG 1G



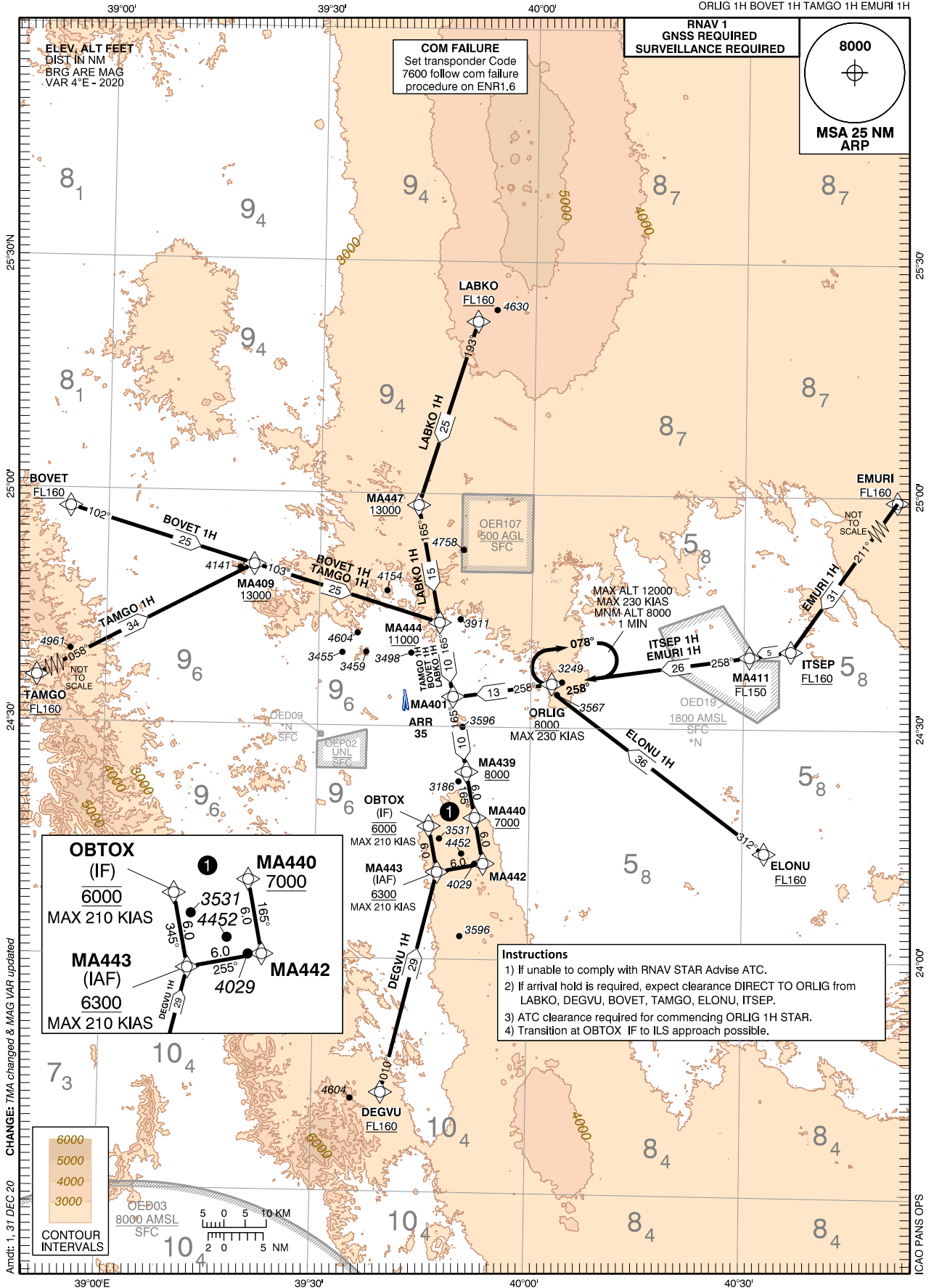
STANDARD ARRIVAL CHART -
INSTRUMENT (STAR) - ICAO

TRANSITION ALTITUDE 13000 FT	APP : 125.1 127.7
SPEED RESTRICTION MAX 250 KIAS BELOW 10000 FT AMSL	TWR : 118.3 124.2
	GND : 121.9
	ATIS : 126.85

MADINAH/Prince Mohammad
Bin Abdulaziz Intl(OEMA)

STAR RNAV RWY 35

DEGVU 1H ELONU 1H ITSEP 1H LABKO 1H
ORLIG 1H BOVET 1H TAMGO 1H EMURI 1H



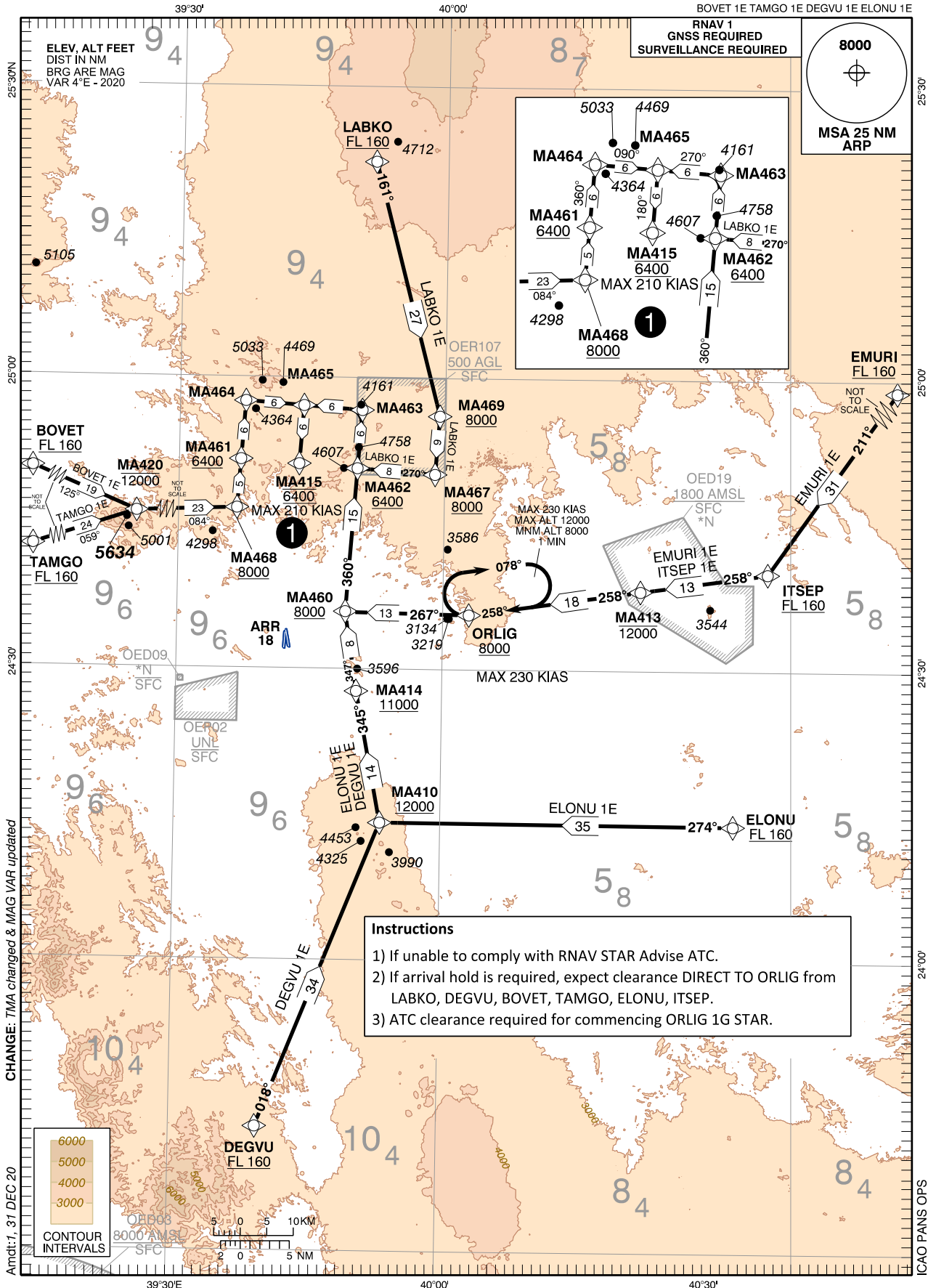
STANDARD ARRIVAL CHART -
INSTRUMENT (STAR) - ICAO

TRANSITION ALTITUDE 13000 FT
SPEED RESTRICTION MAX 250 KIAS BELOW 10000 FT AMSL

APP : 125.1 127.7
TWR : 118.3 124.2
GND : 121.9
ATIS : 126.85

MADINAH/Prince Mohammad
BIn Abdulaziz Intl(OEMA)
STAR RNAV Rwy 18

EMURI 1E ITSEP 1E ORLIG 1E LABKO 1E
BOVET 1E TAMGO 1E DEGUVU 1E ELONU 1E

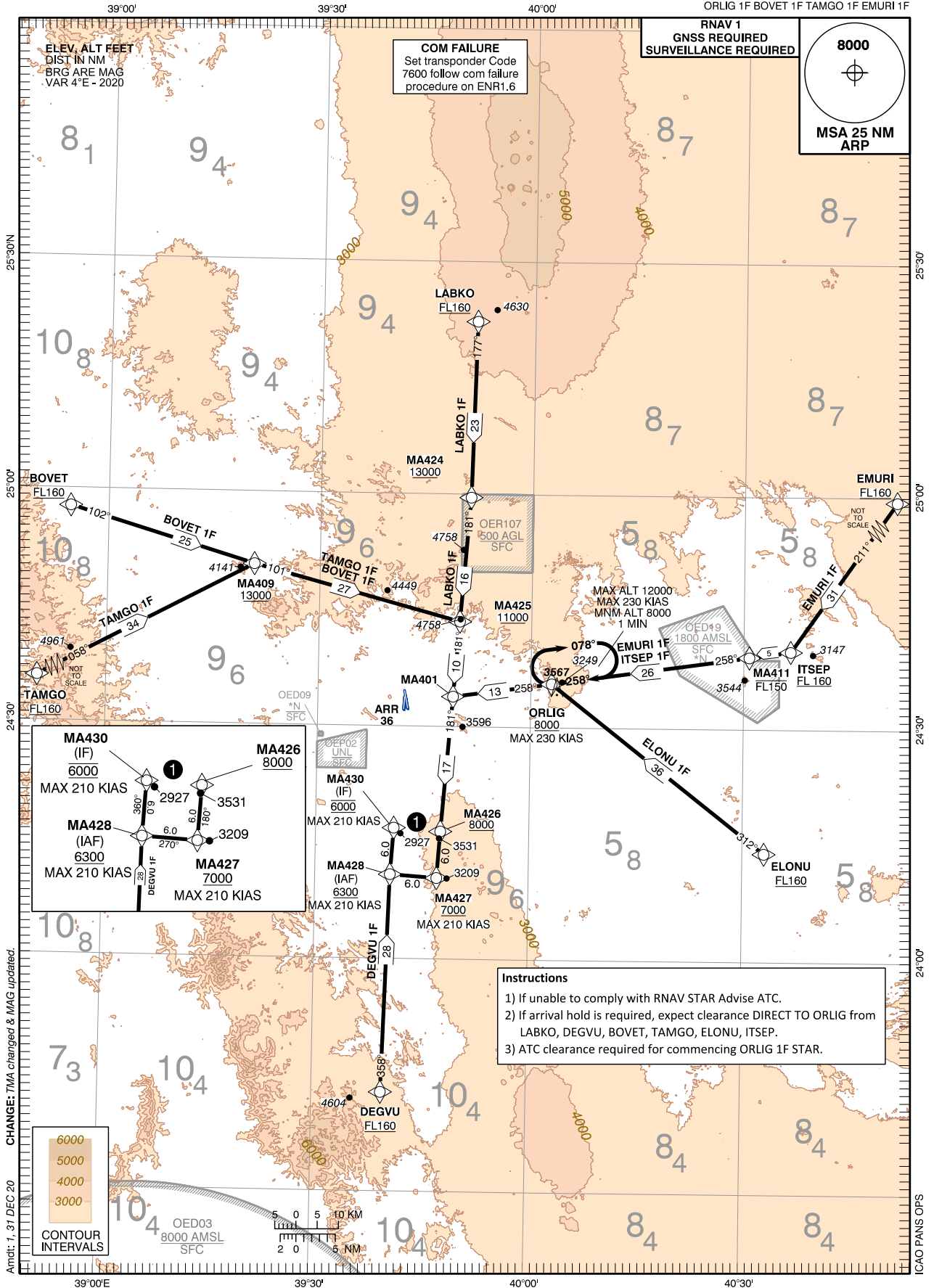


STANDARD ARRIVAL CHART -
INSTRUMENT (STAR) - ICAO

TRANSITION ALTITUDE 13000 FT	APP : 125.1 127.7
SPEED RESTRICTION MAX 250 KIAS BELOW 10000 FT AMSL	TWR : 118.3 124.2
	GND : 121.9
	ATIS : 126.85

MADINAH/Prince Mohammad
Bin Abdulaziz Intl(OEMA)
STAR RNAV RWY 36

DEGVU 1F ELONU 1F ITSEP 1F LABKO 1F
ORLIG 1F BOVET 1F TAMGO 1F EMURI 1F

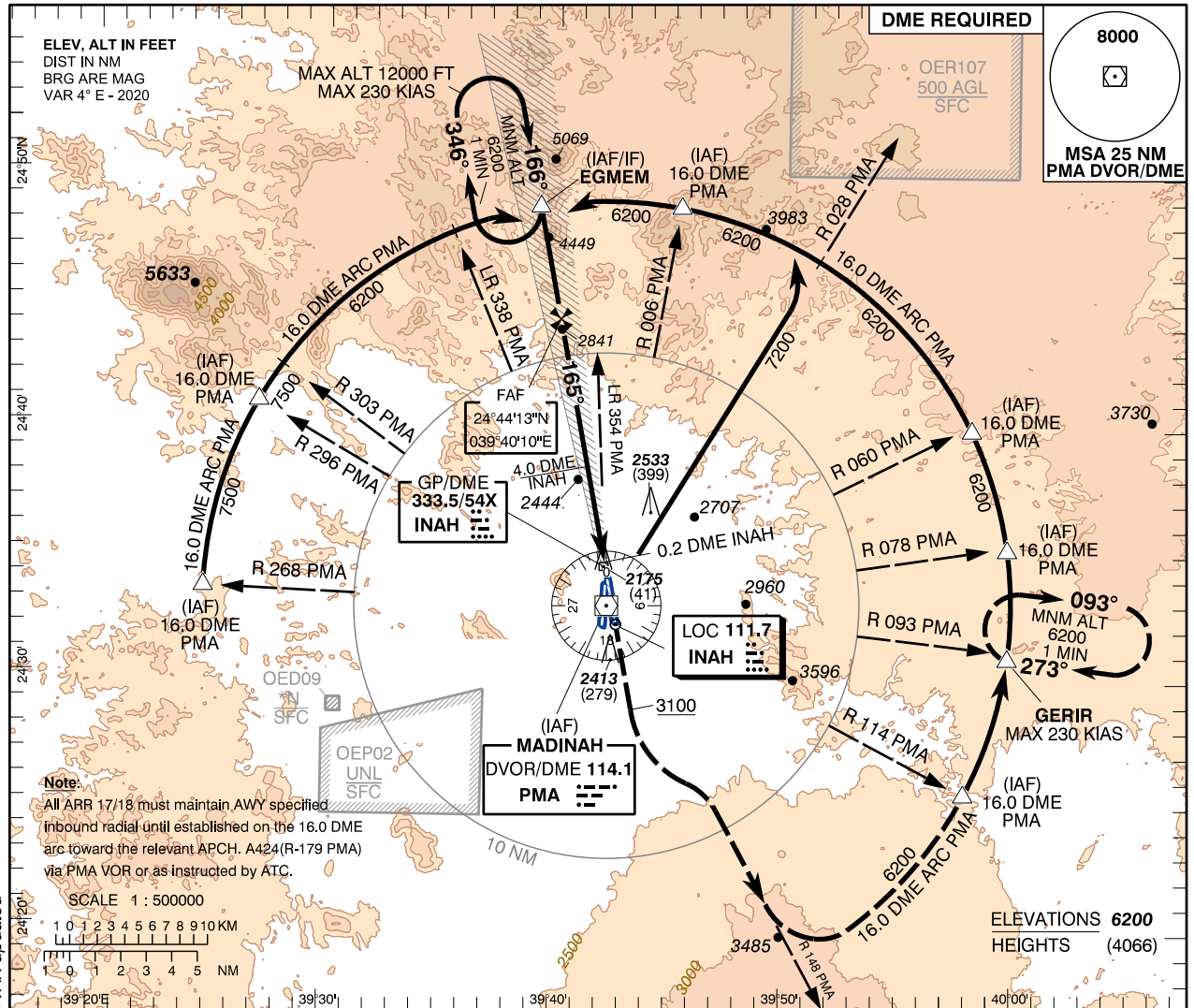


**INSTRUMENT
APPROACH
CHART - ICAO**

AERODROME ELEV 2134 ft
HEIGHTS RELATED TO
THR RWY 17 - ELEV 2134 ft

APP: 125.1 127.7
TWR: 118.3 124.2
GND: 121.9
ATIS: 126.85

**MADINAH/Prince Mohammad
Bin Abdulaziz Intl(OEMA)**
ILS or LOC RWY 17



TRANSITION ALT 13000
TRANSITION LEVEL FL150

MISSED APPROACH
Climb to **6200 FT**, passing **3100 FT**, turn left to establish **RDL 148 PMA**, turn left to establish **16.0 DME ARC PMA** to **GERIR** and hold. (MAX 230 KIAS), or as instructed by ATC. (No turn before MAPt)

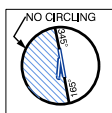
ILS RDH 51.4

THR ELEV 2134

NM to/from **THR RWY 17**

ACFT CAT	A	B	C	D/D _L	GND SPEED	Knots								
						70	90	110	130	150	170	190		
Straight-in Approach	CAT I	OCA(H)	2340(206)			FAF-MAPT 9.8 NM	min:s	8:27	6:34	5:23	4:33	3:57	3:29	3:07
		RVR(m)	750				Rate of Descent	ft/min	371	478	584	690	796	902
	GP INOP WITH SDF	OCA(H)	2790(656)			DME INAH NM	9	8	7	6	5	4		
		RVR(m)	2300				ALT (HGT) 5.2% APCH	4992 (2858)	4674 (2540)	4355 (2221)	4037 (1903)	3719 (1585)	3400 (1266)	
GP INOP WITHOUT SDF	OCA(H)	3230(1096)												
	RVR(m)	4100												
Circling	OCA(H)	3000(866)	3160(1026)	3410(1276)										
	VIS(m)	4000	4900	5000										

CIRCLING NOT AUTHORIZED WEST OF RWY 17/35



CHANGE : New IAFs OCA and MAG VAR updated
Amdt: 1, 31 DEC 20

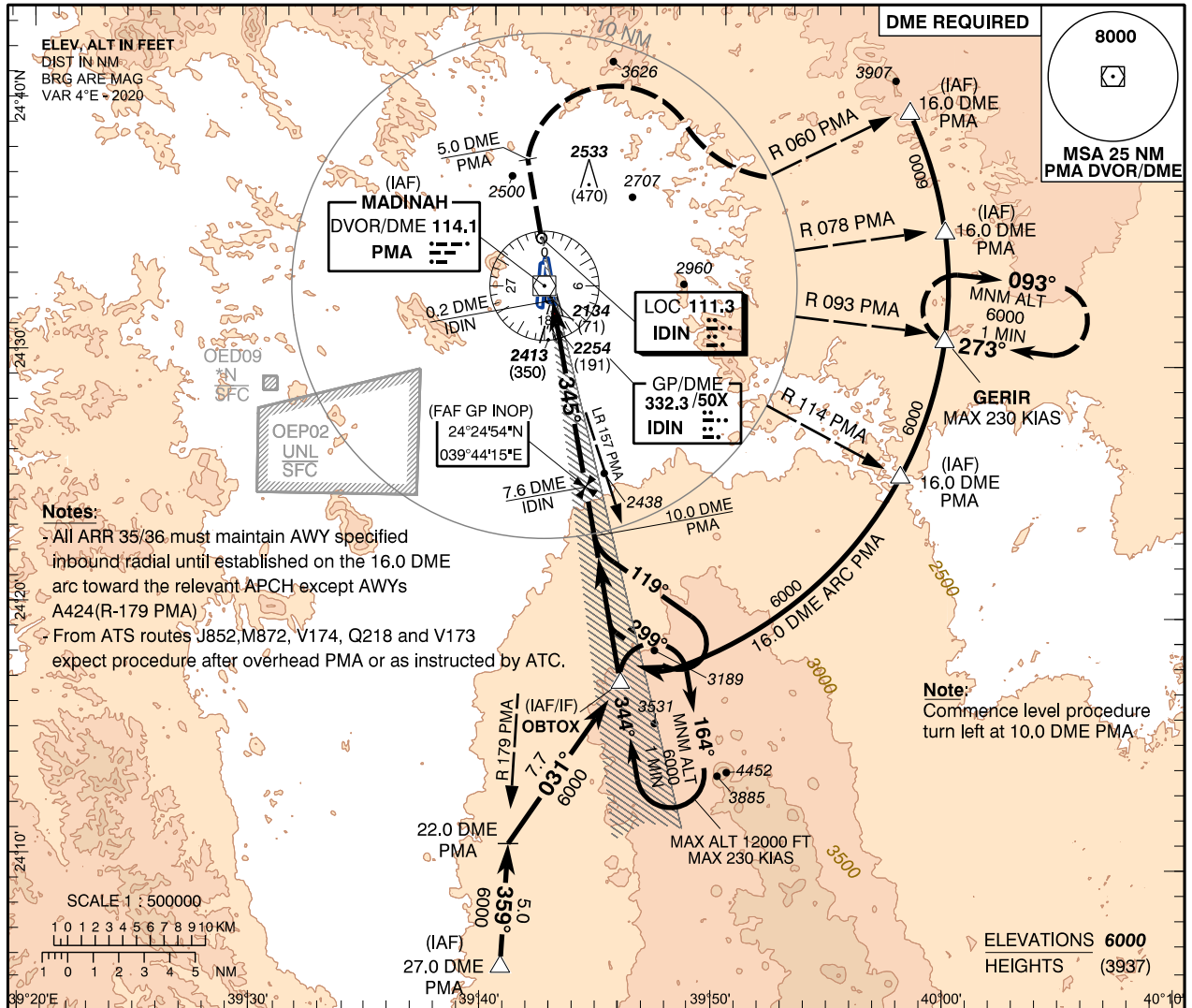
ICAO PANS OPS

**INSTRUMENT
APPROACH
CHART - ICAO**

AERODROME ELEV 2134 ft
**HEIGHTS RELATED TO
THR RWY 35 - ELEV 2063 ft**

APP: 125.1 127.7
TWR: 118.3 124.2
GND: 121.9
ATIS: 126.85

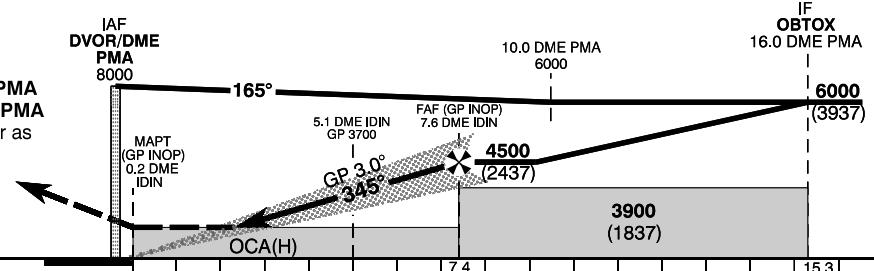
**MADINAH/Prince Mohammad
Bin Abdulaziz Intl (OEMA)**
ILS or LOC RWY 35



TRANSITION ALT 13000
TRANSITION LEVEL FL150

MISSED APPROACH
Climb to **6000 FT**, passing **5.0 DME PMA** turn right to establish **RDL 060 PMA** turn right to establish **16.0 DME ARC PMA** to **GERIR** and hold, (MAX 230 KIAS) or as instructed by ATC.

ILS RDH 50
THR ELEV 2063

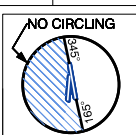


NM to/from THR RWY 35

	ACFT CAT	OCA(H)				GND SPEED	Knots	70	90	110	130	150	170	190
		A	B	C	D/DL									
Straight-in Approach	CAT I MACG (3.5%)	2270(207)	2280(217)	2290(227)	2300(237)	FAF-MAPT 7.5 NM	6:26	5:00	4:05	3:27	3:00	2:39	2:22	
	CAT I MACG (2.5%)	2280(217)	2290(227)	2540(477)			Rate of Descent	371	478	584	690	796	902	1008
	GP INOP			2770(707)			DME IDIN NM	8	7	6	5	4	3	
Circling		3000(866)	3160(1026)	3410(1276)		ALT (HGT) 5.2% APCH	4609(2546)	4291(2228)	3972(1909)	3654(1591)	3336(1273)	3017(954)		
			4000	4900	5000									

MACG: Missed Approach Climb Gradient

CIRCLING NOT AUTHORIZED WEST OF RWY 17/35



CHANGE : Profile view updated
Amdt: 1, 31 DEC 20

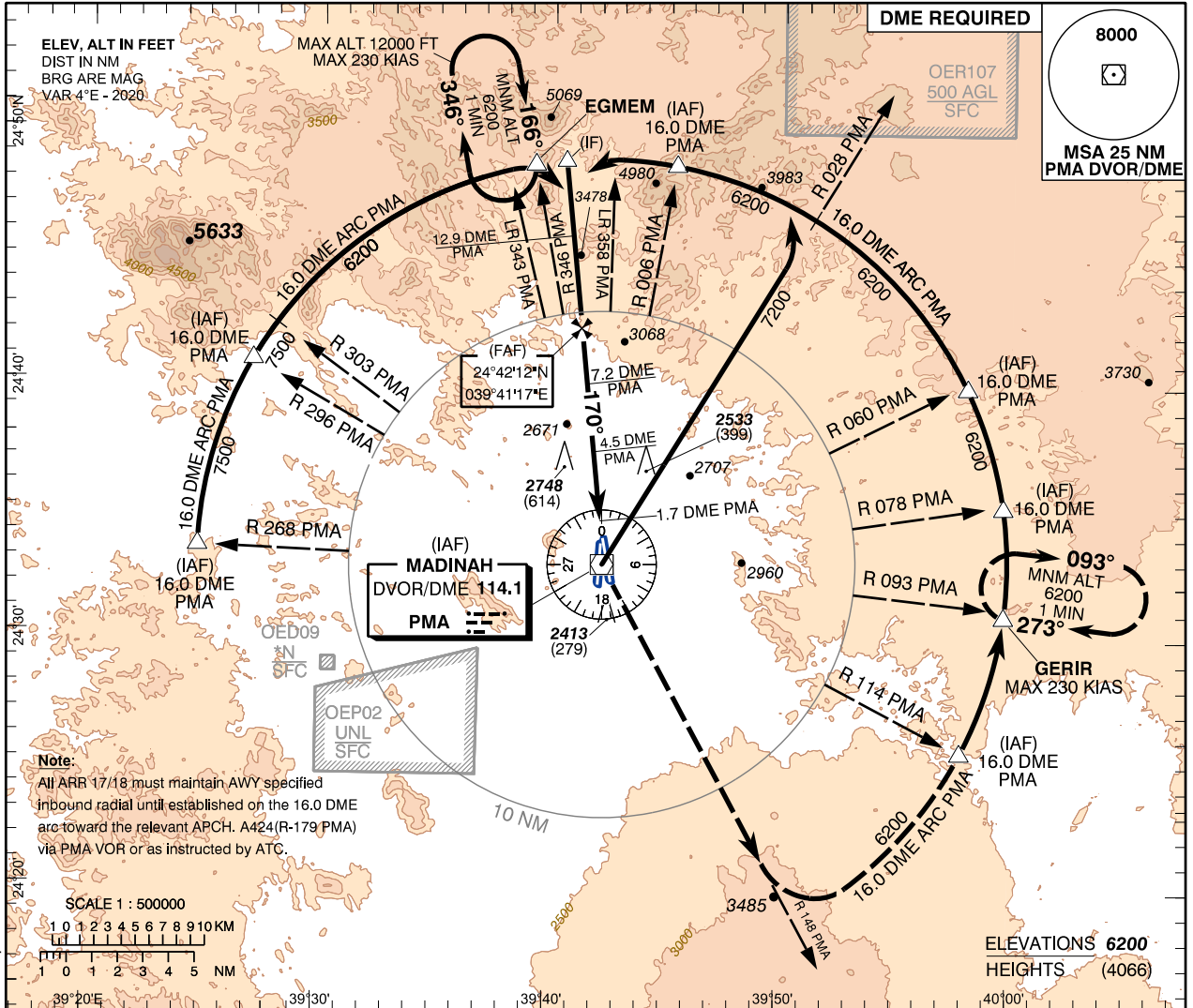
ICAO PANS OPS

**INSTRUMENT
APPROACH
CHART - ICAO**

**AERODROME ELEV 2134 ft
HEIGHTS RELATED TO
THR RWY 17 - ELEV 2134 ft**

APP: 125.1 127.7
TWR: 118.3 124.2
GND: 121.9
ATIS: 126.85

**MADINAH/Prince Mohammad
BIn Abdulazlz Intl (OEMA)
VOR RWY 17**

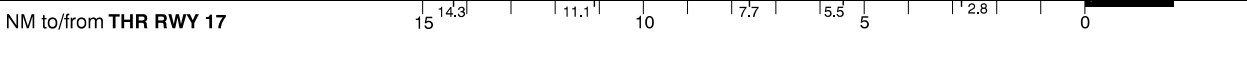


CHANGE : New IAFs OCA and MAG VAR updated

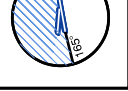
**TRANSITION ALT 13000
TRANSITION LEVEL FL150**

MISSED APPROACH
Climb to **6200 FT**, turn left establish **RDL 148 PMA**, turn left establish **16.0 DME ARC** to **GERIR** and hold (MAX 230 KIAS) or as instructed by ATC.

THR ELEV 2134



		ACFT CAT	A	B	C	D/DL									
Straight-in Approach	VOR WITH SDF	OCA(H)	2910(776)				GND SPEED	Knots	70	90	110	130	150	170	190
		RVR(m)	2900					min:s	6:33	5:06	4:10	3:32	3:04	2:42	2:25
Circling	VOR WITHOUT SDF	OCA(H)	3330(1196)				Rate of Descent	ft/min	369	474	579	685	790	895	1000
		RVR(m)	4600												
		OCA(H)	3000(866)	3160(1026)	3410(1276)										
		VIS(m)	4000	4900	5000										
							DME PMA NM	8	7	6	5				
							ALT (HGT) 5.2% APCH	4168(2034)	3852(1718)	3536(1402)	3220(1086)				



CIRCLING NOT AUTHORIZED WEST OF RWY 17/35

Amdt: 1, 31 DEC 20

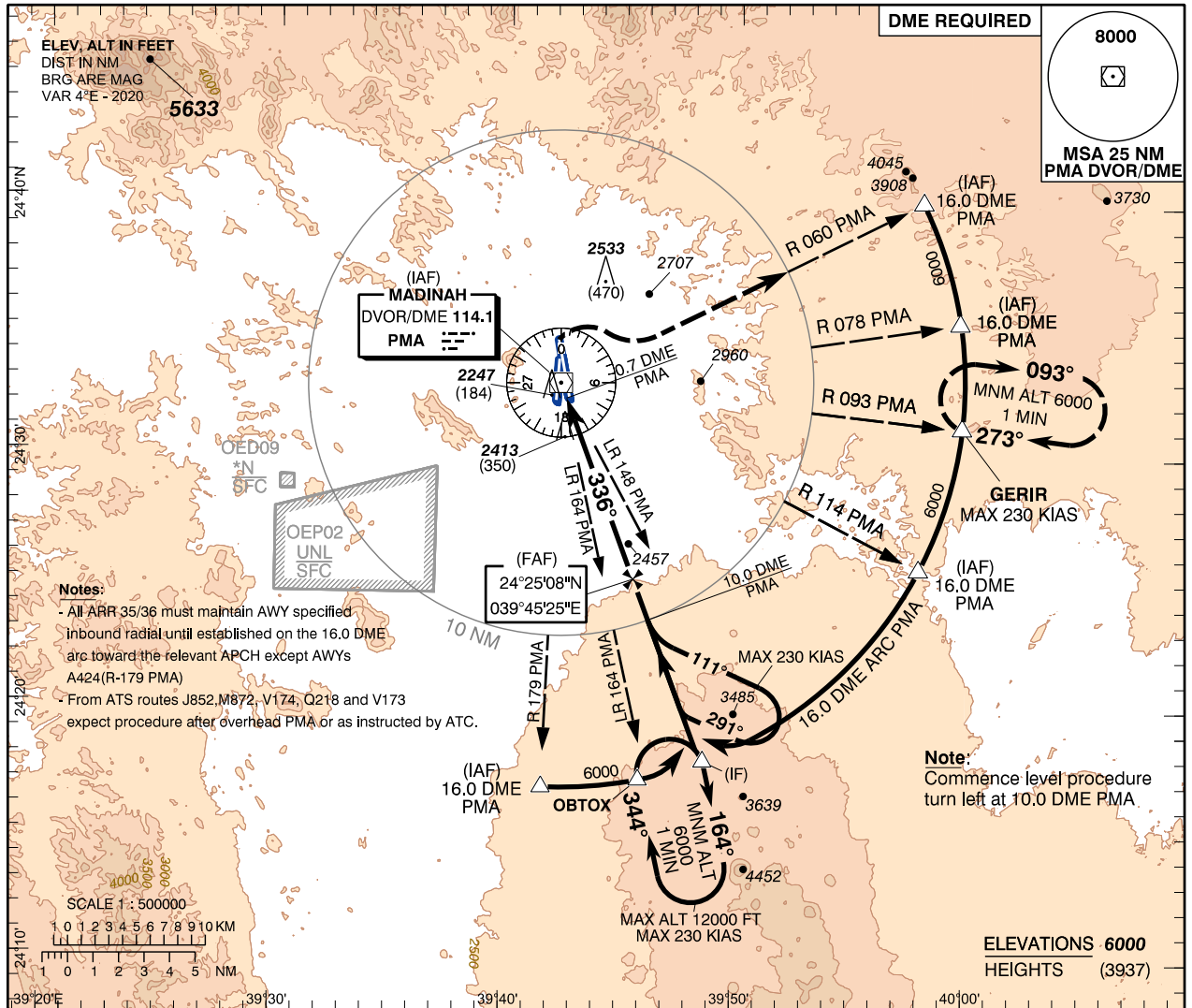
ICAO PANS OPS

**INSTRUMENT
APPROACH
CHART - ICAO**

**AERODROME ELEV 2134 ft
HEIGHTS RELATED TO
THR RWY 35 - ELEV 2063 ft**

APP: 125.1 127.7
TWR: 118.3 124.2
GND: 121.9
ATIS: 126.85

**MADINAH/Prince Mohammad
Bin Abdulaziz Intl (OEMA)
VOR RWY 35**



CHANGE : Profile view updated

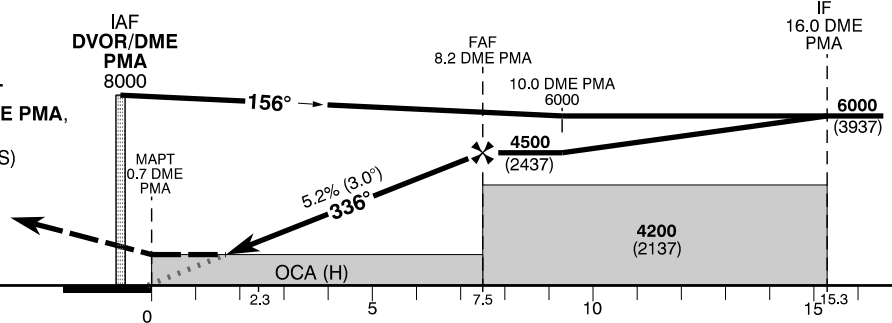
**TRANSITION ALT 13000
TRANSITION LEVEL FL150**

MISSED APPROACH

At MAPt turn right climbing to **6000 FT** to establish **RDL 060 PMA** to **16.0 DME PMA**, then turn right to establish **16.0 DME** arc to **GERIR** and Hold. (Max 230 KIAS) or as instructed by ATC. (No turn before MAPt)

THR ELEV 2063

NM to/from **THR RWY 35**



Amdt: 1, 31 DEC 20

Straight-in Approach	VOR	ACFT CAT	A	B	C	D/DL	GND SPEED	Knots	70	90	110	130	150	170	190
		OCA(H)	2790(727)												
Circling	NO CIRCLING	OCA(H)	3000(866)	3160(1026)	3410(1276)		Rate of Descent	ft/min	369	474	579	685	790	895	1000
		VIS(m)	4000	4900	5000		DME PMA NM		8	7	6	5	4	3	
		ALT (HGT) 5.2% APCH		4435(2372)	4119(2056)	3803(1740)	3487(1424)	3171(1108)	2855(792)						

CIRCLING NOT AUTHORIZED WEST OF RWY 17/35

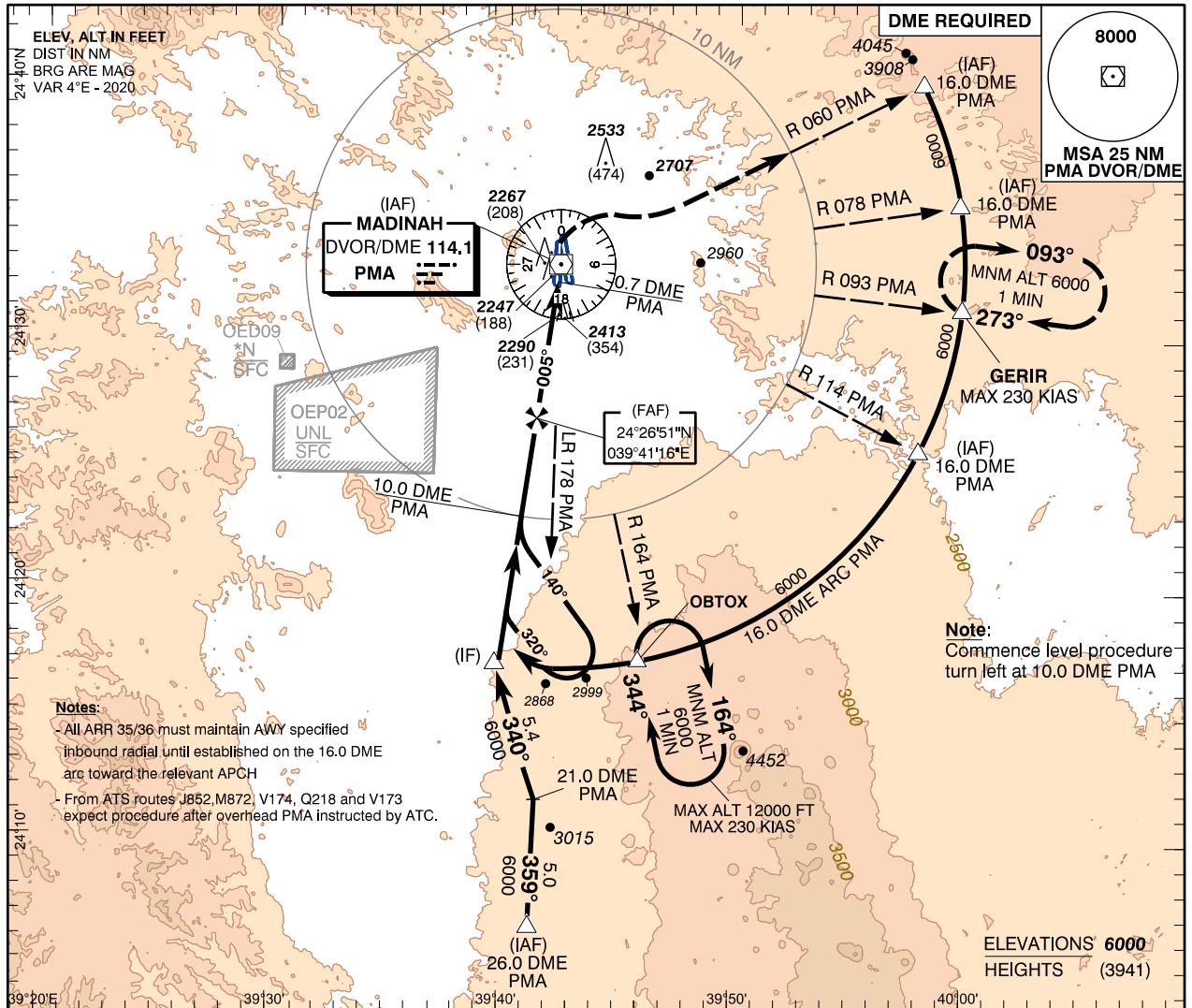
ICAO PANS OPS

**INSTRUMENT
APPROACH
CHART - ICAO**

**AERODROME ELEV 2134 ft
HEIGHTS RELATED TO
THR RWY 36 - ELEV 2059 ft**

APP: 125.1 127.7
TWR: 118.3 124.2
GND: 121.9
ATIS: 126.85

**MADINAH/Prince Mohammad
Bin Abdulaziz Intl(OEMA)
VOR RWY 36**



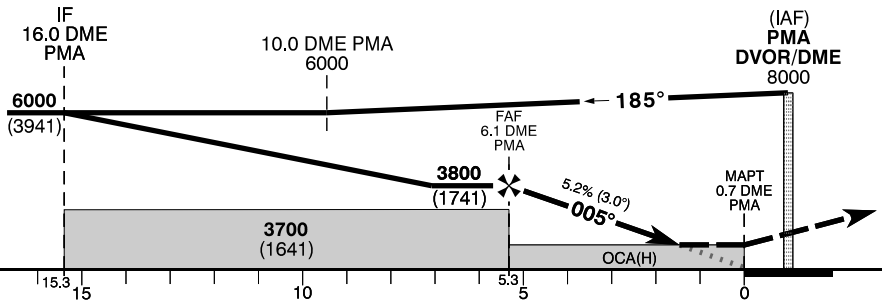
CHANGE : Profile view updated and obst added

**TRANSITION ALT 13000
TRANSITION LEVEL FL150**

MISSED APPROACH
Climbing to **6000 FT**, passing **3000 FT**, turn right to establish **RDL 060 PMA** turn right establish **16.0 DME ARC PMA** to **GERIR** and hold.(MAX 230 KIAS) or as instructed by ATC.

THR ELEV 2059

NM to/from **THR RWY 36**



Amdt : 1, 31 DEC 20

Straight-in Approach	VOR	ACFT CAT	A	B	C	D/DL	GND SPEED	Knots	70	90	110	130	150	170	190
		OCA(H)	2780(721)						min:s	4:35	3:34	2:55	2:28	2:08	1:53
Circling	NO CIRCLING	OCA(H)	3000(866)	3160(1026)	3410(1276)		Rate of Descent	ft/min	369	474	579	685	790	895	1000
		VIS(m)	4000	4900	5000										
		DME PMA NM	6	5	4	3									
		ALT (HGT) 5.2% APCH	3780(1721)	3464(1405)	3148(1089)	2833(774)									

CIRCLING NOT AUTHORIZED WEST OF RWY 18/36

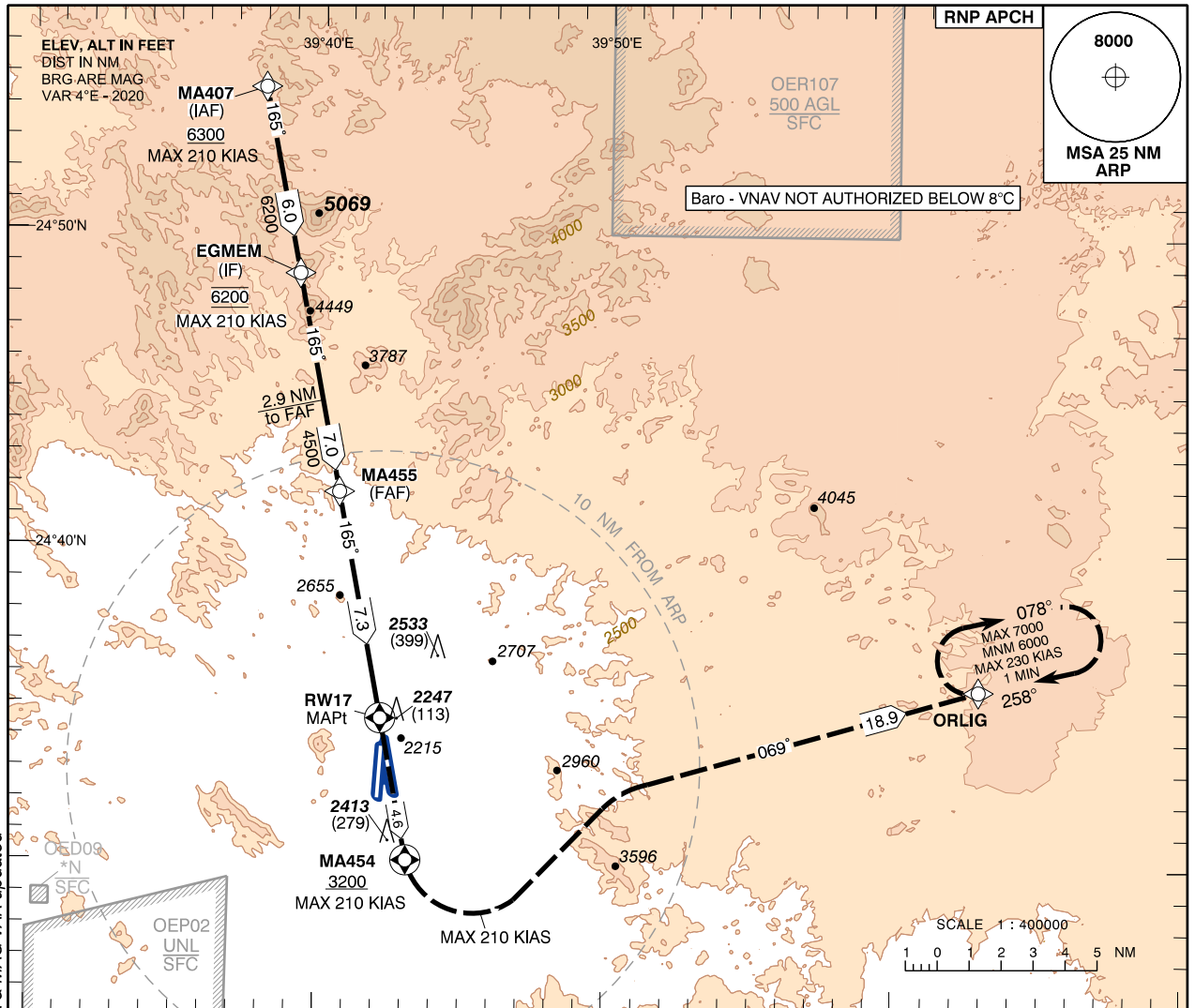
ICAO PANS OPS

**INSTRUMENT
APPROACH
CHART - ICAO**

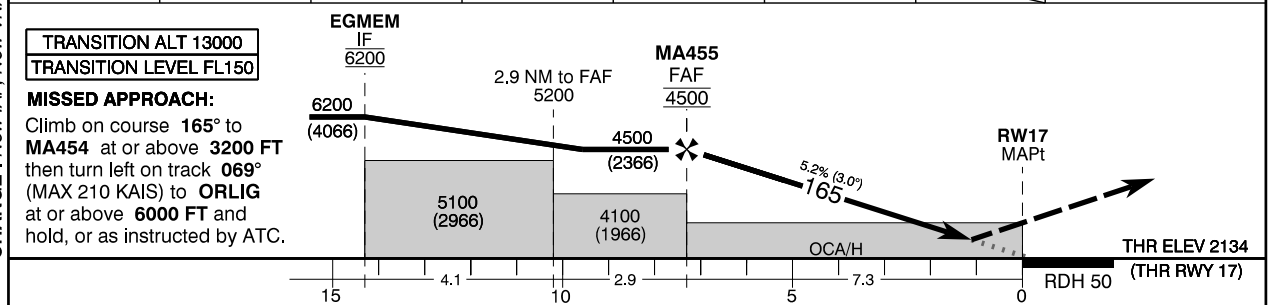
AERODROME ELEV 2134 ft
HEIGHTS RELATED TO
THR RWY 17 - ELEV 2134 ft

APP: 125.1 127.7
TWR: 118.3 124.2
GND: 121.9
ATIS: 126.85

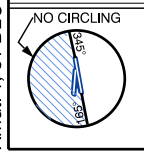
**MADINAH/Prince Mohammad
BIn Abdulaziz Intl(OEMA)
RNP RWY 17**



7	6	5	4	3	2	RW17	DISTANCE FROM THR
4413(2279)	4094(1960)	3776(1642)	3458(1324)	3139(1005)	2821(687)		ALTITUDE (HEIGHT)



Straight-in Approach	ACFT CAT	A	B	C	D/DL	NOTE: NM to/from THR RWY 17
		OCA(H)				
	RVR(m)					
	LNAV					
Circling	ACFT CAT	A	B	C	D/DL	Ground Speed Knots
		OCA(H)				
	RVR(m)					
	VIS(m)					
						Rate of Descent ft/min
						70
						90
						110
						130
						150
						170
						190



Amdt: 1, 31 DEC 20

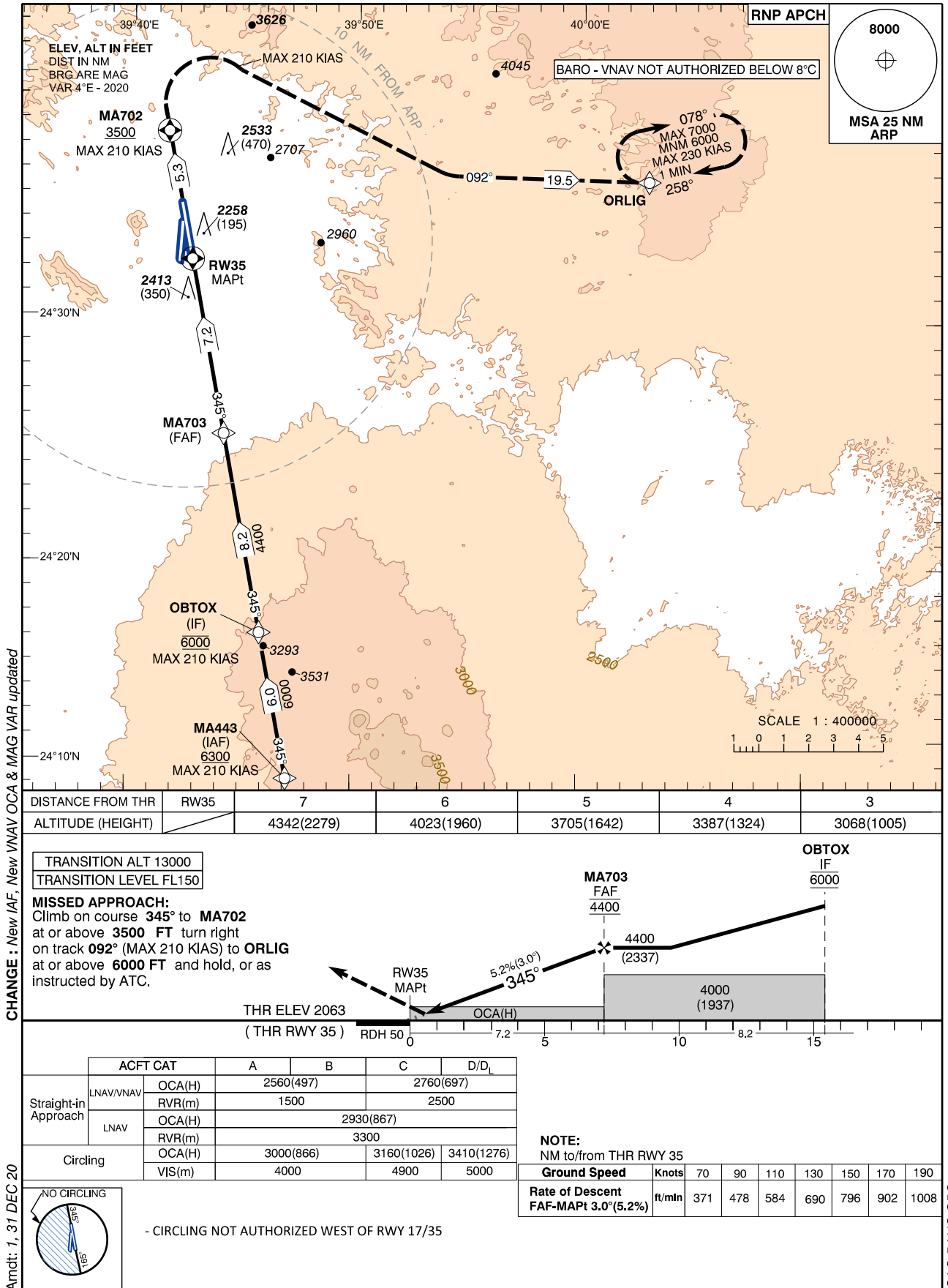
ICAO PANS OPS

**INSTRUMENT
APPROACH
CHART - ICAO**

AERODROME ELEV 2134 ft
HEIGHTS RELATED TO
THR RWY 35 - ELEV 2063 ft

APP: 125.1 127.7
TWR: 118.3 124.2
GND: 121.9
ATIS: 126.85

**MADINAH/Prince Mohammad
BIn Abdulaziz Intl(OEMA)**
RNP RWY 35

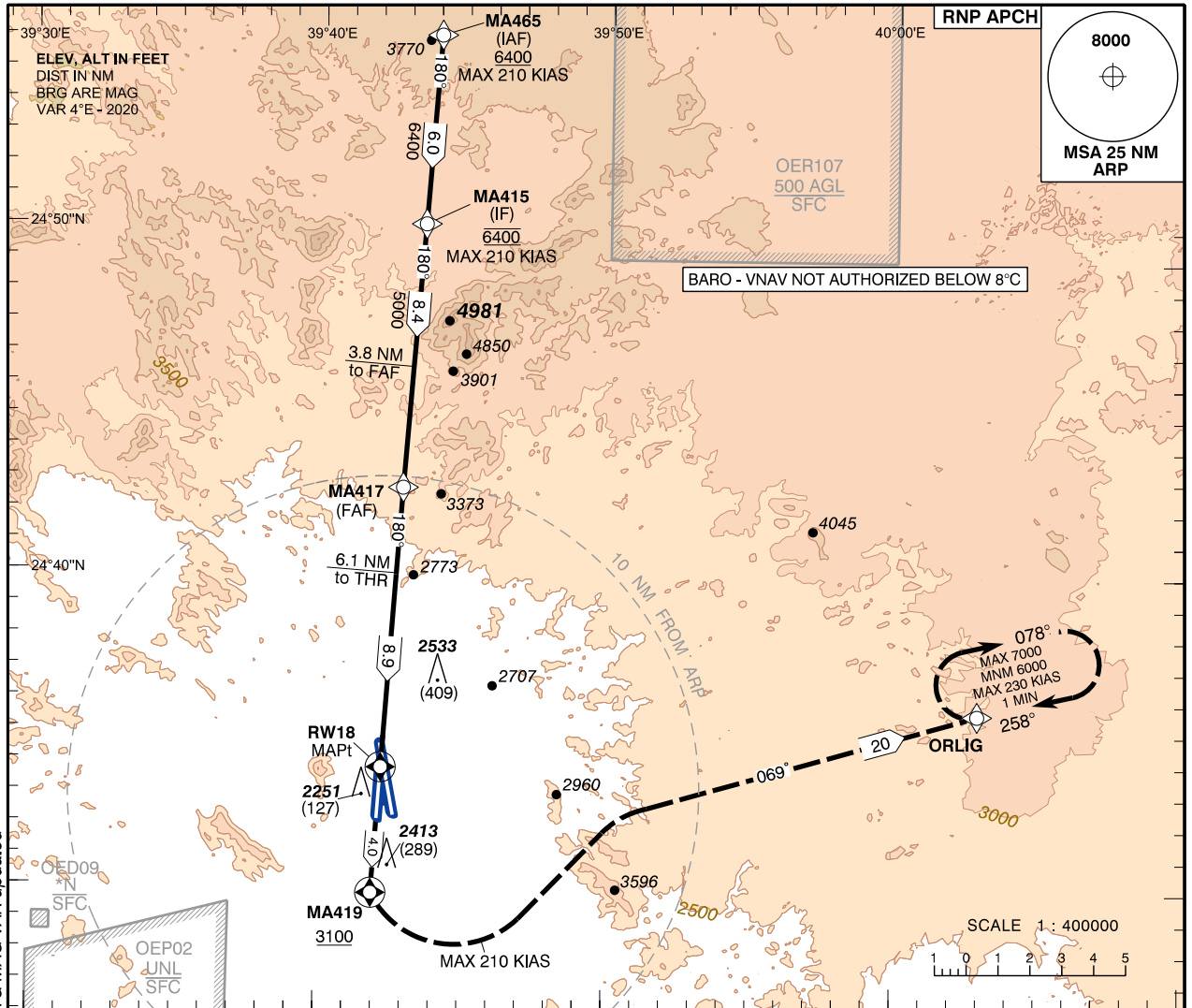


**INSTRUMENT
APPROACH
CHART - ICAO**

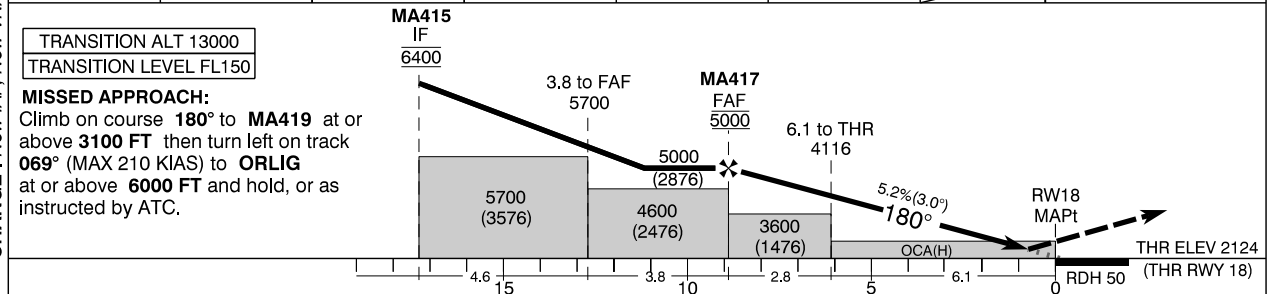
AERODROME ELEV 2134 ft
HEIGHTS RELATED TO
THR RWY 18 - ELEV 2124 ft

APP : 125.1 127.7
TWR : 118.3 124.2
GND : 121.9
ATIS : 126.85

**MADINAH/Prince Mohammad
BIn Abdulaziz Intl(OEMA)
RNP RWY 18**



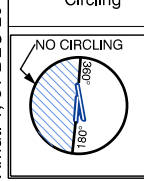
8	7	6	5	4	3	RW18	DISTANCE FROM THR
4721(2597)	4403(2279)	4084(1960)	3766(1642)	3448(1324)	3129(1005)		ALTITUDE (HEIGHT)



ACFT CAT	A				B		C		D/D _L	
	OCA(H)	2600(476)		2810(686)		3000(876)		3410(1276)		
Straight-in Approach	LNAV/VNAV	1800		2800						
	LNAV	3000(876)		3600						
Circling	RVR(m)	3000(866)		3160(1026)		3410(1276)				
	VIS(m)	4000		4900		5000				

NOTE:
NM to/from THR RWY 18

Ground Speed	Knots	70	90	110	130	150	170	190
Rate of Descent FAF-MAPT 3.0°(5.2%)	ft/min	371	478	584	690	796	902	1008



- CIRCLING NOT AUTHORIZED WEST OF RWY 18/36

Amdt: 1, 31 DEC 20

ICAO PANS OPS

**INSTRUMENT
APPROACH
CHART - ICAO**

AERODROME ELEV 2134 ft
HEIGHTS RELATED TO
THR RWY 36 - ELEV 2059 ft

APP : 125.1 127.7
TWR : 118.3 124.2
GND : 121.9
ATIS : 126.85

**MADINAH/Prince Mohammad
Bin Abdulaziz Intl(OEMA)
RNP RWY 36**

